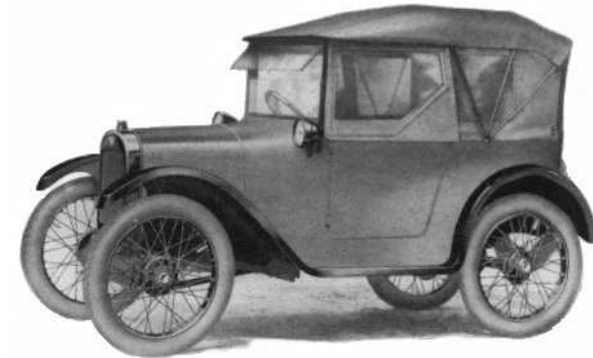


Sports & Special

BA73s	Sump bolt for aluminium sump		.35	ea
C1-224	Phoenix crankshaft, 1½" jet-fed		995.00	ea
C1-224p	Phoenix crankshaft, 1½" pressure-fed		1125.00	ea
C1-225	Phoenix con-rods, 1½" complete with shell bearings		POA	set
BB7d	Rear main lip seal (high-revving engines)		10.90	ea
C1-87	Sports/racing pistons (56.00,56.50, 56.75, 57.00, 57.25 57.50,57.75, 58.00mm. State clamp or floating gudgeon pins)	Sports	195.00	set
BC59f	Gudgeon pin (floating type)	Sports	3.95	ea
BC29r	Cylinder head gasket (Ricardo head)	Special	36.00	ea
2K5076	Camshaft centre bearing rollers (sports)	Sports	4.30	set 8
9E72a	Inlet valve, oversize (29mm)		7.95	ea
9E75c	Valve springs, double		14.00	set
9E30	Valve cup, collet type (for double springs)	Sports	2.85	ea
BC53f	Cam followers, reground (flat)	1924-1939	34.50	set 8
9E71u	Ulster exhaust manifold	Sports	260.00	ea
BE971p	Plate for making 'banana' exhaust system		11.90	ea
BE51	Plate for exhaust downpipe		4.60	ea
BD198	Fan belt, wide (sports/export models)		7.80	ea
1A903	Top fan pulley (wide, sports/export) with bushes	1929-32	26.20	ea
BD197	Bottom fan pulley (wide, sports/export)	1929-39	49.90	ea
9E912	Double (inner) clutch springs		8.40	set
BP73s	Hardy-Spicer propshaft to fit SWB cars (gearbox spider to Cardan joint flange)	Special	264.00	ea
BP118s	Hardy-Spicer propshaft to fit LWB cars (gearbox spider to Cardan joint flange)	1932-33	240.00	ea
BP957	Fixing bolts & nyloc nuts for gearbox spider	Special	3.20	set
BP918	Fixing bolts & nyloc nuts for Cardan joint flange	Special	3.30	set
9C134a	Steering arm (lowered suspension)		75.00	ea
BP120k	Crown wheel & pinion (5.67:1)		440.00	set
BO128t	Halfshaft (short, extended taper, .890" journal)		188.00	ea
BO136t	Halfshaft (long, extended taper)		192.00	ea
1A7212a	Key for long-taper halfshaft		1.20	ea
1A7661a	Rear hub, outer (extended taper)		112.80	ea
BR947u	Cow horns for repro Ulsters built on Ruby chassis	Special	65.00	pr
BM24r	Raked steering box (Ulster/Cup)		265.00	ea
9E917c	Steering column clamp bracket (Ulster)		41.00	ea
B8-63/4e	Radius arm ends for lowered suspension		142.00	pr
9C161	Bolt, nut & spring washer for above	Sports	5.90	ea
BU2s	Front shock absorber assembly (sports/racing)		139.00	ea
9E93	Rear brake cable brackets for use with flattened springs		3.85	pr
BS6s	Wheel nut (stainless steel)		3.25	ea
BO54s	Wheel stud, long (EN24) & rivets	Special	4.90	ea
BS948h	400/425/450 x 18" inner tube (heavy duty)		18.90	ea
B8-34	Choke pull assembly (nickel/chrome)	Ulster	81.00	ea
BD241	Radiator cap, chrome winged type	Nippy	20.80	ea
9E907	Windscreen base rubber strip (Nippy)	33-37	6.60	ea

Austin Seven Spare Parts Catalogue



A7 Components

18 Russell Avenue
Dunchurch
Rugby
CV22 6PX

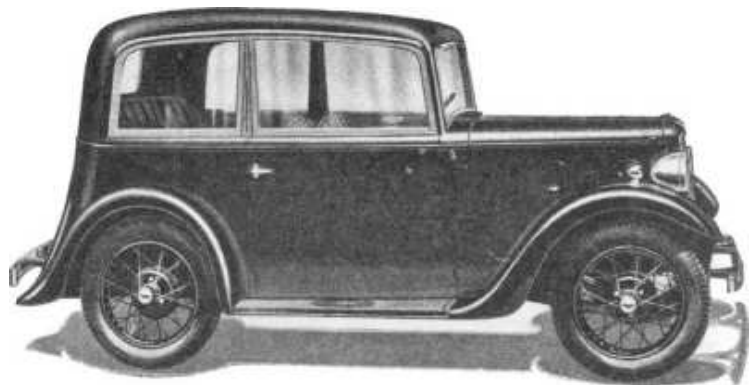
David Cochrane

01788 522033 david@a7c.co.uk

www.a7c.co.uk

Please note:

- Our prices are in pounds sterling and include VAT where applicable.
- All parts are priced per unit unless otherwise stated.
- Cheques should be made payable to A7 Components Ltd.
Please do not send us a cheque until you have been given the correct total for your order. If you prefer, you can telephone us with your debit (or credit) card details.
- Prices do not include postage and packing – these costs are calculated when your order is packed. We regret that we are generally not able to provide the total cost (including shipping) of an order prior to packing. Parts can be sent to anywhere in the world, and we use Royal Mail, Parcelforce or other carrier at our discretion, or as specified by you. Our packing & carriage fee covers postage/carriage, packing & handling, insurance, payment processing, etc. Please note that a signature may be required on delivery and you should make sure that the package is undamaged before signing for it. In the event of an insurance claim you must keep all packaging materials and contents for inspection.
- We are usually open Monday to Saturday, 8.30 am to 7.30 pm. Callers are welcome, by appointment only please.
- Prices and availability may change due to circumstances beyond our control. New spares are frequently added to our range, so if the part you want isn't listed, please ask. OOS = Out of stock (temporarily we hope). POA = Price on application (please ask for a price for this part).
- All goods remain the property of A7 Components Ltd until payment has been received in full.
- Should you wish to return an item, please notify us within 7 days of receiving it. Return postage is the responsibility of the customer.



BT922	Piston ring clamp	All	9.50	ea
BT923	Piston ring pliers	All	5.00	ea
BT979	Valve grinding stick	All	2.40	ea
BT958	Brake shoe spring hook	All	11.20	ea
BT924	Kingpin greaser	1923-36	13.00	ea
BT926	Kingpin extractor tool	All	25.90	ea
BT925	Rivet punch	All	21.60	ea
BT951	7/16" x 1/2" box spanner (front hub castle & early halfshaft nuts)	All	6.80	ea
BT952	Hub bearing nut / starting nut box spanner	1923-38	14.30	ea
BT940	Thread restorer file (BSW/BSF)		26.30	ea
BT941	1/4" BSF thread insert/repair kit		26.90	ea
BT942	1/4" BSW thread insert/repair kit		28.60	ea
BT943	5/16" BSF thread insert/repair kit		27.90	ea
BT944	5/16" BSW thread insert/repair kit		29.60	ea
BT961t	1/4 BSF tap		3.90	ea
BT961d	1/4 BSF die		5.80	ea
BT962t	5/16 BSF tap		3.90	ea
BT962d	5/16 BSF die		5.80	ea
BT963t	3/8 BSF tap		3.90	ea
BT963d	3/8" BSF die		5.80	ea
BT965t	1/4 BSW tap		3.90	ea
BT965d	1/4 BSW die		5.80	ea
BT966t	5/16 BSW tap		3.90	ea
BT966d	5/16 BSW die		7.70	ea
BT967t	Halfshaft tap (5/8 x 16 tpi)		19.20	ea
BT967d	Halfshaft die (5/8 x 16 tpi)		23.00	ea
BT953d	Die for outer hub thread (HSS)	All	73.50	ea
BT968t	Tap for top of Austin stub axle (kingpin cap)	1923-36	19.20	ea
BT969p	1/2" parallel reamer		26.90	ea
BT964	9/32" reamer	All	24.00	ea
BT981	Engine compression testing kit		23.10	ea
BT982	Battery & charging system tester		29.60	ea
BT983	Ignition spark tester		5.80	ea
BT988	Battery hydrometer		3.00	ea
BT989	Battery post & terminal cleaner		2.65	ea
BT986	Mechanics stethoscope		8.90	ea
Consumables				
BT973	Blue Hylomar		5.70	tube
BT974	Stud and nut lock (10ml)		4.20	bottle
BT972	Loctite Stud 'n' Bearing Fit (5ml)		12.60	ea
BT975	Chemico double-ended tin of valve grinding paste	All	5.95	ea
BT947	1/4" thread inserts		.40	ea
BT948	5/16" thread inserts		.50	ea
BT977	Simoniz Engine gloss black paint		9.40	can
BT976	Petrol tank repair patch		9.40	ea
BT978	Ethanolmate petrol additive/corrosion inhibitor (treats 55 gal)	All	13.90	ea
MISCELLANEOUS				
Other				
BZ931	Reflective snap-on arm band		1.95	ea
BZ911	Keyring with Chummy stamps		3.25	ea

1029	List of Spare Parts	Aug 1933	9.00	ea
1406C	List of Spare Parts	Nov 1936	9.00	ea
1521	List of Spare Parts - Body Parts	Apr 1937	9.00	ea
1586A	List of Spare Parts	Oct 1938	9.00	ea
BT864	Austin Seven Lubrication Simply Explained	All	4.40	ea

Brochures & Posters

BT831	The Austin Seven Comes of Age 20pp colour brochure	1931	5.00	ea
BT832	As I was Going to St Ives 24pp colour brochure (1292)	1935	6.50	ea
BT833	The Austin Seven Covers the Country 4-fold green leaflet	1936	1.50	ea
BT834	Ulster tri-fold colour leaflet (730b)	1931	5.75	ea
BT835	Ruby 16 page colour brochure (1212)	1934	7.20	ea
BT836	Austin vans 7/10/12hp 20 page colour brochure	1937	11.50	ea
BT842	Special bodies poster		4.90	ea
BT843	'Chummy in the Lane' poster		5.90	ea
BT844	Garage wallchart		19.90	ea
BT848	Castrol lubrication chart	1931	7.50	ea
BT849	Castrol lubrication chart	1938	7.50	ea

Tools

Toolkit

BT1	Austin spanner 1/2" x 9/16" BSF (2nd-hand)	All	4.40	ea
BT2	Austin spanner 3/8" x 7/16" BSF (2nd-hand)	All	5.40	ea
BT3	Austin spanner 1/4"s x 5/16" BSF (2nd-hand)	All	7.60	ea
BT1c	Austin spanners (BT1, BT2, BT3 & BT12 - 2nd-hand)	All	27.00	set
BT901	8 BSF/BSW combination spanners	All	23.30	set
BT32	3/16"x 1/4" box spanner	All	3.90	ea
BT4	1/4" x 5/16" box spanner	All	5.20	ea
BT40	5/16" x 3/8" box spanner	All	4.30	ea
BT951	7/16" x 1/2" box spanner (front hub castle & early halfshaft nuts)	All	6.80	ea
	1/2" BSF nut		.50	
	1/4" BSF countersunk screw		.35	
BT6a	1/2" x 9/16" box spanner (18mm plug spanner)	1923-36	8.60	ea
BT5	5/8" x 3/4" box spanner	All	14.70	ea
BT7	5/16" x 6" tommy bar	All	1.80	ea
BT8	Jet key for Zenith 22FZ carburettor	1923-32	7.80	ea
BT11	Hub cap & steering column spanner	All	8.25	ea
BT16	Wheel brace (second-hand)	All	29.00	ea
BT16	Wheel brace	All	9.00	ea
BT31	Spanner for dynamo casing nut & cylinder nut	1923-36	6.90	ea
BT41b	Grease gun (for modern nipples)		14.00	ea
BT41c	Grease cartridge for above		3.60	ea
BT910	Feeler gauges (Imperial)	All	4.85	set
BT23a	Canvas tool roll, 12 pockets, 18"x12"	All	5.50	ea
BT987	27 LED Multilamp (with batteries)	All	5.70	ea
BT980s	Foot pump (single)	All	5.20	ea
BT980d	Foot pump (heavy-duty double barrel)	All	13.60	ea

Garage

BT17	Valve spring compressor (2nd hand)	All	25.90	ea
BT24	Hub puller	All	14.20	ea
BT920	Flywheel puller	All	16.90	ea
BT921	Clutch cover plate assembly bolt	All	.40	ea

ENGINE

Crankcase

BA3	Timing gear case gasket (magneto)	1923-28	1.95	ea
BA6	Timing gear cover gasket (magneto)	1923-28	1.95	ea
BA18	Starting dog felt seal (magneto)	1923-28	1.95	ea
BA18a	Starter dog lip seal (modern replacement)	1923-28	2.40	ea
BA19	Starting dog felt housing gasket (magneto)	1923-28	1.05	ea
BB36	Starting nut (magneto)	1923-28	OOS	
BB41	Starting nut (early coil)	1928-31	OOS	
BT952	Starting dog (magneto) box spanner	1923-28	14.30	ea
BB52	Starting nut (starter dog), coil	1931-39	14.30	ea
BB37	Starting nut lockwasher	1923-28	.50	ea
BB33	Magneto drive felt seal	1923-28	1.60	ea
BB30	Magneto drive Woodruff key	1923-28	.70	ea
BA120	Nosecone gasket (coil)	1928-39	.70	ea
BA121	Nosecone bolt	1928-39	.30	ea
BA121c	Nosecone bolts & spring washers	1928-39	1.60	set
BA125	Front bearing housing plate	1928-39	2.40	ea
BA126	Front bearing cover plate screw	1928-39	.35	ea
BA127	Front bearing cover plate tab washer	1928-39	.60	ea
BA25	Cylinder block base stud (EN16)	All	1.15	ea
BA25s	Cylinder block base stud (stepped)		2.85	ea
BA26a	Cylinder block base deep nut	All	1.00	ea
BA38	Barrel nut	All	1.95	ea
BA25c	Block / crankcase studs, barrel nuts, nuts & spring washers	All	19.90	set
BC13	Cylinder block base gasket	All	.90	ea
BA37	Oil baffle	All	5.90	ea
BA65f	Bell housing stud (BSF)	1923-28	1.15	ea
BA65	Bell housing stud (BSW)	1928-39	1.10	ea
BA65s	Bell housing stud (stepped, BSF or BSW)	All	2.60	ea
BA65c	Bell housing studs, nuts & spring washers	All	9.50	set
BA66	Nuts for bell housing studs	All	.70	set
BA166	Flywheel pit cover (2nd-hand)	1932-39	7.70	ea
BA139	Oil jet (early)	1923-36	3.25	ea
1A909	Oil jet (late)	1936-39	3.25	ea
BA55	Oil-way plug (small)	All	2.50	ea
BA57	Oil-way plug (medium)	1923-32	2.40	ea
BA59	Oil-way plug (large)	All	2.60	ea
BA168	Oil dipstick (2nd-hand)	1932-39	9.20	ea
BA71	Sump (2nd-hand)	All	13.70	ea
BA72	Sump gasket	All	1.20	ea
BA73f	Sump bolt (BSF)	1923-26	2.35	ea
BA73	Sump bolt (BSW)	1926-39	2.15	ea
BA73o	Sump bolt (oversize BSW, same size head)		2.60	ea
BA73s	Sump bolt for aluminium sump	Sports	.35	ea
BA138	Oval sump washer	All	.30	ea
BA138o	Oval sump washer (oversize)		.55	ea
BA73c	Sump bolts, oval washers & spring washers	All	34.20	set
BA75f	Sump filter frame	All	5.50	ea
BA75g	Sump filter gauze	All	4.85	ea
BA76	Sump gauze bolt	1928-39	.25	ea

BF978	Accelerator pedal rubber	1934-39	3.50	ea
BN96c	Pedal rubber set	1934-39	13.20	set
2H7145	Gear lever cover grommet	1935-39	12.40	ea
2H6560	Bonnet catch rubber sleeve	All	2.25	ea
2H5905	Bonnet buffer	1934-39	2.45	ea
2H6161	Bonnet corner rubber (all models except Chummy)	1930-39	2.95	ea
3G227	Bonnet ventilator handle (Ruby, etc)	1934-39	7.00	ea
BW931	Bonnet rest rubber	1923-34	1.90	foot
BW932	Bonnet rest webbing, front	1934-39	9.10	4 ft
BW933	Bonnet rest rubber/webbing, rear	1934-39	29.00	8 ft
BV985	Toolbox lid rubber knob (Ruby, etc)	1934-39	3.15	ea
BV986	Screws, nuts & washers for above	1934-39	.25	set
BV975	Door buffer (Box, etc)	1930-34	4.50	ea
2H8000	Door buffer (Early [ARQ] Ruby)	1934-36	4.60	ea
2H8001	Door buffer (Late [ARR] Ruby)	1936-39	4.60	ea
BV977	Door check-straps (various colours; Chummy/Box)	1923-34	13.00	pr
C1-67	Door pull chains (various colours; Box/Ruby)	1930-39	25.90	pr
3A3601r	Top door hinge seal (Ruby/Pearl)	1934-39	2.50	ea
BG952	Lucas trafficator base seal	1934-39	3.20	ea
BV932	Running board rubber motif		12.70	ea
2H7165	Spare wheel cover rubber beading	1934-39	10.00	5½ ft
BE913	Fuel filler pipe grommet	1934-39	9.80	ea
1A5382	Rear bumper iron rubber ferrule	1934-39	5.50	ea
1A5383	Blanking piece for cars without bumpers (rear)	1934-39	5.50	ea
BW951	Hood rest rubber (Chummys, Tourers, 2 seaters)	1930-36	4.20	ea
BW952	Late 4 seater tourer hood buffers	1936-39	12.70	pr
BW953	Pearl (early C type) hood rest buffer	1934-36	3.10	ea
BW954	Pearl (late CA type) hood rest buffer	1936-39	3.70	ea
2H5014	Sliding roof channel buffer	1934-39	1.05	ea
BR953	Rear axle bump stop (Box, etc)	1931-34	5.20	ea
BR153	Low frame rear axle bump stop	1934-39	11.60	ea
BK943	Handbrake gaiter (Box, etc; various colours)	1930-34	11.00	ea
3A9097	Handbrake gaiter (Ruby, etc; various colours)	1934-39	15.60	ea
BK944	Handbrake gaiter plate (Box, etc)	1930-34	1.95	ea
Windscreen				
BW902	Seal between top and bottom glass (Chummy/Tourer)	1923-32	6.20	3 ft
BW903	Seal for bottom of windscreen frame (Chummy/Tourer)	1923-32	6.20	3 ft
BW905	Window surround rubber seal (Top Hat & RK saloons)	1926-31	.90	foot
BW906	Windscreen top hinge-to-body seal (Box saloons)	1930-34	6.30	3 ft
BW910	Windscreen surround rubber seal (Box steel frame screen)	1930-33	9.10	5ft
BW904	Windscreen surround rubber seal (RP Box)	1932-34	22.70	ea
2H7976	Windscreen surround rubber seal (Ruby/Pearl)	1934-39	27.20	ea
BW907	Seal for bottom of windscreen frame (Opal/Tourer)	1934-39	5.10	3 ft
9E907	Windscreen base rubber strip (Nippy)	33-37	6.60	ea
BW913	Windscreen pillar base seal (LWB Tourer)	1932-39	2.75	ea
BW914	Top windscreen end clips (Chummy/Tourer; nickel/chrome)		5.90	ea
BW915	Windscreen patent plate	1923-30	5.20	ea
C1-61r	Windscreen catch rubber buffer (early [ARQ] Ruby)	1934-35	.95	ea
2H7104s	Window winder spring (Box/Ruby)	1930-39	6.70	ea
2H7997	Window handle (rear quarter – late [ARR] Ruby)	1936-39	36.30	ea

Crankshafts, Conrods & Pistons

BB1	Crankshaft, 1 ¹ / ₈ " jet-fed (Phoenix)	1923-29	1125.00	ea
BB45	Crankshaft, 1 ⁵ / ₁₆ " jet-fed (Phoenix)	1929-36	995.00	ea
BB45p	Crankshaft, 1 ⁵ / ₁₆ " pressure-fed (Phoenix)	1929-36	POA	
C1-224	Crankshaft, 1 ¹ / ₂ " jet-fed (Phoenix)	Sports	995.00	ea
C1-224p	Crankshaft, 1 ¹ / ₂ " pressure-fed (Phoenix)	Sports	1125.00	ea
BC43	Con-rod, 1 ¹ / ₈ " (2nd-hand)	1923-29	9.50	ea
BC67p	Phoenix con-rods, 1 ⁵ / ₁₆ " (for white-metalling)	1929-36	POA	set
C1-225	Phoenix con-rods, 1 ¹ / ₂ " complete with shell bearings	Sports	POA	set
BC68	Big end bolt (EN24U)	1923-37	4.35	ea
1A920	Big end bolt (shell-bearing)	1937-39	6.80	ea
BC45a	Big end nuts, self locking	All	3.20	set 8
BC68c	Big end bolts & self locking nuts	1923-37	36.00	set 8
1A920c	Big end bolts (shell-bearing) & self locking nuts	1937-39	56.90	set 8
BC46	Big end bolt split pins	All	.30	set 8
BC56c	Pistons, complete with rings & pins (std, +.010", +.020", +.030", +.040", +.060", +.080")	All	210.00	set
BC57c	Set of 4 piston rings	All	22.00	set
C1-87	Sports/racing pistons (56.00,56.50, 56.75, 57.00, 57.25 57.50,57.75, 58.00mm. State clamp or floating gudgeon pins)	Sports	195.00	set
BC59	Gudgeon pin (clamp type)	All	3.25	ea
BC59f	Gudgeon pin (floating type)	Sports	3.90	ea
BC47	Little end bolt	All	.65	ea
BC48	Little end lockwasher	All	.35	ea
BC47c	Little end bolts & lockwashers	All	3.90	set
BB37	Starting nut lockwasher	All	.50	ea
1A894	Centre main lockwasher	1936-39	.65	ea
BB22	Front crankshaft key	1929-39	.60	ea
BJ2	Rear crankshaft key	All	.90	ea
BA125	Front main bearing cover plate	1928-39	1.85	ea
BA126	Front bearing cover plate screw	1928-39	.35	ea
BA127	Front bearing cover plate tab washer	1928-39	.60	ea
BB7	Rear main felt seal	1923-29	2.20	ea
BB7a	Rear main lip seal (1 ¹ / ₈ "	1923-29	3.00	ea
BB7b	Rear main lip seal (1 ⁵ / ₁₆ " – early)	1929-30	2.90	ea
BB7c	Rear main lip seal (1 ⁵ / ₁₆ "	1930-39	2.90	ea
BB7d	Rear main lip seal (high-revving engines)	Sports	10.90	ea
BB10	Rear main bearing housing, magneto engine (2nd-hand)	1923-29	4.00	ea
BB46	Rear main bearing housing (2nd-hand)	1929-39	5.50	ea
BB47	Rear main seal plate (2nd-hand)	1929-39	3.40	ea
BB47a	Rear main seal plate for modern oil seal (seal not incl.)	1929-39	19.90	ea
BB49	Rear main oil thrower	1929-39	4.55	ea
BB11	Rear main bearing housing gasket (thin)	All	.30	ea
BB48	Oil seal plate gasket (thick)	All	.55	ea
BB13d	Rear main seal plate tab washer	All	.65	ea
BJ3	Flywheel nut (1 ¹ / ₈ "	1923-29	3.90	ea
BJ4	Flywheel nut lockwasher (1 ¹ / ₈ "	1923-29	.50	ea
BJ29	Flywheel nut (1 ⁵ / ₁₆ "	1929-39	3.90	ea
BJ30	Flywheel nut lockwasher (1 ⁵ / ₁₆ "	1929-39	.50	ea
BB912	Magneto engine tab washer set	1923-29	2.85	set
BB913	Coil engine tab washer set	1929-39	4.10	set

BT922	Piston ring clamp	All	9.50	ea	BV954	Chassis Number plate	1927-39	3.25	ea
BT923	Piston ring pliers	All	5.00	ea	3A628p	'Dependability' bonnet stay plate (red/silver)	1934-39	4.70	ea
Engine Bearings					BW984	Battery fixing strap	1934-39	43.20	ea
BB15	Front main ball bearing (JAF)	1923-33	37.50	ea	BV985	Toolbox lid rubber knob (Ruby, etc)	1934-39	3.15	ea
BB15	Front main ball bearing (RHP)	1923-33	52.50	ea	BV986	Screws, nuts & washers for above	1934-39	.25	set
BB17	Front main roller bearing (RHP)	1923-33	75.80	ea	BN3	Clutch/brake pedal pad	1923-32	12.30	ea
BB15a	Front main A/C bearings (alternative to ball & roller)	1923-34	154.00	pr	BN4	Conical nut for pedal pad	1923-32	5.50	ea
BB68	Front main A/C bearings (RHP)	1934-39	179.00	pr	BV961	Seat hinges (Chummy, etc)	1924-30	7.80	ea
BB17	Rear main roller bearing (1 ¹ / ₈ " – RHP)	1923-29	75.80	ea	BV962	Seat hinges (Box, etc)	1930-34	32.40	pr
BB51	Rear main roller bearing (1 ⁵ / ₁₆ ")	1929-39	85.00	ea	BV965	Transmission tunnel rear universal joint cover	1930-39	13.90	ea
BB16	Timing gear ball bearing (magneto engine)	1923-28	18.00	ea	BV946	Hood catches (early/late)		34.60	pr
BB16s	Timing gear ball bearing (sealed; magneto engine)	1923-28	20.40	ea	C1-209	Sliding roof fastener	1934-39	32.40	ea
1A885/6	Centre main shell bearings (std, .010", .020", .030", .040", .050")	1936-39	46.00	pr	3A5143	Sliding roof handle	1934-39	12.90	ea
1A919	Big end shell bearings (std, .010", .020", .030", .040", .050")	1937-39	65.00	set 8	BV940	Pytchley sunroof badge	1930-39	5.20	ea
BB19	Camshaft centre bearing roller race	1923-36	17.50	ea	2H5014	Sliding roof channel buffer	1934-39	1.05	ea
BB20	Camshaft centre bearing rollers	1923-36	2.90	set 9	5B271	Rear blind knob	1930-39	4.40	ea
2K5076	Camshaft centre bearing rollers (sports)	Sports	4.30	set 8	5B272	Rear blind hook	1930-39	5.70	ea
1A891	Camshaft centre bearing (second-hand)	1936-39	5.60	pr	Dashboard & Controls				
Cylinder Head					BM128	Gas/ignition control plate	1923-32	30.30	ea
BC82	Cylinder head (later 18mm, 2nd hand)	1929-36	26.00	ea	BM12	Control lever friction block	1923-34	2.35	ea
1A911	Cylinder head (high comp, 2nd hand)	1936-39	125.00	ea	BM13	Control lever screw	1923-34	2.75	ea
BC29	Cylinder head gasket (low comp. head – Payen)	1923-36	35.40	ea	BM14	Control lever spring	1923-34	.95	ea
BC29r	Cylinder head gasket (Ricardo head)	Special	36.00	ea	BM12c	Control lever blocks, screws & springs	1923-34	12.00	set
1A912	Cylinder head gasket (high comp. head – Payen)	1936-39	35.60	ea	BM183k	Trafficator knob	1934-39	15.20	ea
BC982	Head core plug	1930-39	.50	ea	BG983	Indicator switch (steering column)		17.20	ea
BC18	Top water outlet manifold (early)	1923-36	11.00	ea	BBG902	Dial faces stick-on replacement (state which required)		3.00	ea
BC19	Water outlet manifold gasket (early)	1923-36	.50	ea	BG161b	Ammeter / small oil gauge bezel (1½" dia)		12.70	ea
BC20a	Water outlet manifold stud (stainless)	1923-36	1.60	ea	BG168b	Petrol / large oil gauge bezel (2" dia)		9.60	ea
BC20c	Water outlet manifold stud, nut & fibre washer	1923-36	1.80	set	BG170b	Magmo / Nemag speedo bezel (2½" dia)		16.80	ea
BC20s	Water outlet manifold stud, stepped		3.00	ea	BG161g	Ammeter / small oil gauge glass (1.6" dia)		3.20	ea
BC23	Fibre washer for water manifold stud	1923-36	.10	ea	BG168g	Petrol / large oil gauge glass (1.9" dia)		1.95	ea
9E16	Top water outlet manifold (late)	1936-39	11.00	ea	BG170g	Magmo / Nemag speedo glass (2.2" dia)		2.70	ea
9E45	Water outlet manifold gasket (late)	1936-39	.45	ea	BG170r	Rubber seal cord for above		.50	ea
BG918	Spark plug, Champion 18mm	1923-36	5.75	ea	BG247b	Panel light bulb (6V 3W SCC)		1.50	ea
BG917	Spark plug, NGK 18mm	1923-36	6.20	ea	BG962	Patent plate (magneto engine)	1923-28	8.50	ea
BG914	Spark plug, NGK 14mm	1936-39	3.45	ea	BG965	Patent plate (coil engine)	1929-37	10.40	ea
BC6c	Cylinder head nuts	All	1.25	set 14	BG968	Patent plate (late coil engine)	1937-39	7.20	ea
BC7c	Cylinder head washers	All	.45	set 14	BE65/6	Choke swivel bracket (24-29 / 29-32)	1924-32	13.00	ea
BD42	Radiator top hose (Chummy, etc)	1923-28	5.20	ea	BE69	Choke control ring (nickel/chrome)	1923-32	4.50	ea
BD43	Radiator bottom hose (Chummy, etc)	1923-28	5.90	ea	BG175	Starter/choke pull bulkhead cable bracket (Box, etc)	1932-34	2.40	ea
BD103	Radiator top hose (late Chummy, Box, etc)	1928-34	5.40	ea	B8-34	Choke pull assembly (nickel/chrome)	Ulster	81.00	ea
BD122	Radiator bottom hose (late Chummy, Box, etc)	1928-34	5.95	ea	BA22	Magneto switch	1923-26	38.90	ea
BD43	Radiator top & bottom hoses (Ruby, etc)	1934-39	4.50	ea	BG315a	PLC5 ignition switch (incl. keys & mounting clip)	1934-39	76.40	ea
BD44	Enots radiator hose clip (nickel/brass)	1923-39	10.80	ea	BG160c	Ignition switch retaining wire clip and gasket	1932-39	6.30	ea
BD44j	Zinc-plated hose clip	All	.65	ea	BG160k	Ignition spade key	1932-39	.95	ea
BT977	Simoniz Engine gloss black paint		9.40	can	BG115b	Ignition bulb (6V)	1928-32	1.10	ea
Cylinder Block					BG163a	Ignition warning light (6V)	1932-39	28.20	ea
BC901	Cylinder liner	All	22.40	ea	BG163b	Ignition bulb (2.5V)	1932-39	.90	ea
BC13	Cylinder block base gasket	All	.90	ea	Rubber, Leather & Chains				
					BN903	Brake/clutch pedal rubber (Chummy/Box)	1923-34	4.90	ea
					BN96	Brake/clutch pedal rubber (Ruby, etc)	1934-39	4.90	ea

C1-36b	Bonnet catch (Box, etc.)	1930-34	15.60	ea	BC13p	Block base shim plate (aluminium – state .023" or .039")		7.90	ea
C1-36	Bonnet catch (Ruby, etc.)	1934-39	15.40	ea	BC14b	Block core plug (knock in)	1931-39	.75	ea
2H6560	Bonnet catch rubber sleeve	All	2.25	ea	BC24	Valve guide, flanged	1923-31	4.25	ea
2H5905	Bonnet buffer	1934-39	2.45	ea	BC24c	Valve guides, flanged (8)	1923-31	34.00	set
2H6161	Bonnet corner rubber (all models except Chummy)	1930-39	2.95	ea	BC74	Valve guide, plain	1931-39	3.90	ea
3G227	Bonnet ventilator handle (Ruby, etc)	1934-39	7.00	ea	BC74c	Valve guides, plain (8)	1931-39	31.10	set
BW931	Bonnet rest rubber	1923-34	1.90	foot	BC5	Head stud, standard length (EN16T)	All	1.35	ea
BW932	Bonnet rest webbing, front	1934-39	9.10	4 ft	BC5c	Standard head studs, nuts & washers	1923-36	20.50	set
BW933	Bonnet rest rubber/webbing, rear	1934-39	29.00	8 ft	BC5s	Head stud, standard length (stepped)	as req'd	3.25	ea
BV943	Hood pivot pins & nuts	1923-26	41.00	pr	9E28	Head stud, long (EN16T)	1936-39	1.45	ea
BV944	Hood pivot pins & nuts	1926-34	41.00	pr	9E28c	Late head studs, nuts & washers	1936-39	20.70	set
BV945	Hood rest brackets & bolts		30.20	pair	9E28s	Head stud, long (stepped)	as req'd	3.25	ea
2H7250	Wing piping	1930-39	1.85	ft	BD47	Side water inlet manifold	All	18.80	ea
BW941	Spare wheel carrier studs (large flange)	1926-34	4.55	ea	BD48	Water inlet manifold gasket	All	.80	ea
2H7165	Spare wheel cover rubber beading	1934-39	10.00	5½ ft	BD48p	Side water jacket repair plate & screws	All	8.40	ea
3A5478	Spare wheel cover lock escutcheon	1934-39	12.20	ea	BC21a	Water inlet manifold stud (stainless; long)	All	1.80	ea
3A1890	Spare wheel cover tab plates	1934-39	19.20	pr	BC22a	Water inlet manifold stud (stainless; short)	All	1.60	ea
2H7183a	Spare wheel cover T-key	1934-39	6.50	ea	BC21c	Side water manifold studs, nuts & fibre washers	All	3.70	set
BE913	Fuel filler pipe grommet	1934-39	9.80	ea	BC21s	Water inlet manifold stud (stepped; long)	as req'd	4.15	ea
C1-53b	Luggage carrier badge	1934-39	3.25	ea	BC22s	Water inlet manifold stud (stepped; short)	as req'd	3.00	ea
BW883	Numberplate	All	16.20	ea	BC23	Fibre washer for water manifold stud	All	.10	ea
BW884	Front numberplate brackets (late Chummy/Box)		7.20	pr	BE29a	Exhaust manifold gasket	All	2.75	ea
1A5374	Front bumper horseshoe bracket	1934-39	35.30	ea	BC8	Manifold stud, medium (EN16T)	1923-32	.95	ea
1A5375p	Bumper blade top plug	1934-39	13.00	ea	BC9	Manifold stud, long (EN16T)	1923-32	1.35	ea
1A5375b	Oval bumper bolt	1934-39	7.00	ea	BC10	Manifold stud, short (EN16T)	1923-32	1.05	ea
1A5382	Rear bumper iron rubber ferrule	1934-39	5.50	ea	BC76	Manifold stud, standard (EN16T)	1932-39	.95	ea
1A5383	Blanking piece for cars without bumpers (rear)	1934-39	5.50	ea	BC11	Manifold nut (brass)	All	.75	ea
Door Fittings					BC12	Manifold washers	All	.30	set 7
BV970	Door handle (Chummy)	1926-30	51.90	ea	BE31	Inlet manifold top bolt	1923-32	.55	ea
BV970	Door handle (Box)	1930-34	51.90	ea	BC9c	Up-draught manifold studs, brass nuts & washers	1923-32	13.80	set 7
2H7130	Door handle with lock & keys	1934-39	44.70	ea	BC76c	Side-draught manifold studs, brass nuts & washers	1932-39	12.00	set 7
2H7128	Door handle without lock	1934-39	32.40	ea	BC8s	Manifold stud, medium (stepped)	as req'd	2.60	ea
2H6364	Interior door pull handle	1932-39	18.90	ea	BC9s	Manifold stud, long (stepped)	as req'd	2.85	ea
BV978	Door striker plates (Chummy/Tourer)	1923-34	10.80	ea	BC10s	Manifold stud, short (stepped)	as req'd	2.20	ea
BV979	Door striker plates (Box, etc)	1930-34	13.00	ea	BC76s	Manifold stud, standard (stepped)	as req'd	2.60	ea
BV973	Door cappings (nickel-plated)	1928-34	38.80	set	BA26a	Cylinder block base deep nut	All	1.00	ea
BV976	Door handle nut (Late Chummy/Box)	1930-34	2.95	ea	BA38	Barrel nut	All	1.95	ea
BV974	Door hinge (1 ¹ / ₈ " x 2" wide, undrilled)	1923-29	27.90	ea	Camshaft				
BV972	Door hinge (1 ¹ / ₂ " x 2" wide, undrilled)	1930-34	29.30	ea	BD111	Camshaft / fan pulley nut	1928-39	.45	ea
BV975	Door buffer (Box, etc)	1930-34	4.50	ea	BB22	Camshaft key	All	.60	ea
2H8000	Door buffer (Early [ARQ] Ruby)	1934-36	4.60	ea	BB23	Camshaft gear nut (magneto)	1923-28	.40	ea
2H8001	Door buffer (Late [ARR] Ruby)	1936-39	4.60	ea	BB24	Camshaft gear nut lockwasher (magneto)	1923-28	.55	ea
2H7124	Door lock covers	1934-39	25.90	pr	BB43	Camshaft gear nut (coil)	1928-39	3.00	ea
BV977	Door check-straps (various colours; Chummy/Box)	1923-34	13.00	pr	BB44	Camshaft gear nut lockwasher (coil)	1928-39	.55	ea
C1-67	Door pull chains (various colours; Box/Ruby)	1930-39	25.90	pr	BB19	Camshaft centre bearing roller race	1923-36	17.50	ea
3A3601r	Top door hinge seal (Ruby/Pearl)	1934-39	2.50	ea	BB20	Camshaft centre bearing rollers	1923-36	2.90	set 9
2H7104s	Window winder spring (Box/Ruby)	1930-39	6.70	ea	2K5076	Camshaft centre bearing rollers (sports)	Sports	4.30	set 8
BV990	Gordon England door sill plates (pair)		95.00	pr	1A891	Camshaft centre bearing (second-hand)	1936-39	5.60	pr
Interior					BA135	Camshaft front retaining bolt (square head)	1928-39	4.45	ea
BG27	Austin Car No. & Always Quote This Number plates	1923-27	25.90	pr	BA136	Fibre washer for BA135	1928-39	.15	ea
BV953	Chassis & Car Number plates	1927-39	6.50	pr	BA32	Camshaft rear bearing bolt	All	.40	ea

BA34	Camshaft rear bearing gasket	1923-32	.25	ea
BA169	Rear camshaft bearing (2nd-hand)	1933-39	4.40	ea
BA170	Camshaft rear bearing gasket	1933-39	.25	ea
BB42	Camshaft oil thrower (2nd-hand)	1928-39	2.45	ea
BC53	Cam followers	1924-1939	34.50	set 8
BC53f	Cam followers, reground (flat)	1924-1939	34.50	set 8
BD169	Bottom fan pulley felt seal	1928-39	1.20	ea

Valve Gear

BC61	Valve, split collet type (exhaust quality)	1923-34 / 1938-39	6.90	ea
9E72a	Inlet valve, oversize (29mm)	Sports	7.95	ea
BC34	Split collet	1923-34 / 1938-39	2.90	pr
BC33	Valve cup, collet type	1923-34 / 1938-39	2.40	ea
9E30	Valve cup, collet type (for double springs)	Sports	2.85	ea
BC107	Valve, pin type	1935-37	6.80	ea
BC108c	Valve pins	1935-37	1.80	set 8
BC109	Valve cup, pin-type	1935-37	2.85	ea
BC40	Tappet screw (early cam follower)	1923-24	4.55	ea
BC55	Tappet screw	1924-39	4.55	ea
BC41	Tappet locknut (early cam follower)	1923-24	4.50	ea
BC60	Tappet lock nut	1924-39	4.50	ea
BC32c	Valve springs, single	All	9.10	set 8
9E75c	Valve springs, double	Special	14.00	set 8
BT17	Valve spring compressor (2nd hand)	All	25.90	ea
BT975	Chemico double-ended tin of valve grinding paste	All	5.95	ea
BT979	Valve grinding stick	All	2.40	ea
BC24	Valve guide, flanged	1923-31	4.25	ea
BC24c	Valve guides, flanged (8)	1923-31	34.00	set
BC74	Valve guide, plain	1931-39	3.90	ea
BC74c	Valve guides, plain (8)	1931-39	31.10	set
BT964	9/32" reamer	All	24.00	ea
BC54c	Tappet guides (8, second-hand)	1924-39	26.00	set
BT910	Feeler gauges (Imperial)	All	4.85	set
BC53	Cam followers	1924-1939	34.50	set 8
BC53f	Cam followers, reground (flat)	1924-1939	34.50	set 8
BC35	Valve chest cover, early	1923-30	26.50	ea
BC36	Valve chest cover stud	All	.95	ea
BC37	Valve cover thumbscrew	All	8.10	ea
BC937	Valve chest thumbscrew & stud (second-hand)	1934-39	5.60	ea
BC38	Valve chest cover cork gasket	1923-30	1.70	ea
BC70	Valve chest cover, late	1930-39	22.00	ea
BC72	Valve chest cover cork strip	1930-39	1.40	ea

Manifolds & Exhaust System

BE21	Inlet manifold, up-draught (2nd-hand)	1923-32	12.80	ea
BE22a	Inlet / exhaust manifold gasket	1923-32	.75	ea
BE25c	Carb / inlet manifold bolts, nuts & washers	1923-32	2.80	set
BE28	Carb / inlet manifold gasket, u/d	1923-32	.40	ea
BE122a	Carburettor / manifold gasket, s/d	1932-39	.75	ea
BE30	Exhaust manifold, up-draught (2nd-hand)	1923-32	37.50	ea
BE117	Exhaust manifold, side-draught (2nd-hand)	1932-39	24.50	ea
9E71u	Ulster exhaust manifold	Sports	260.00	ea
BE29a	Exhaust manifold gasket	All	2.75	ea

BS919	3.50x19" tyre (Longstone 3-block vintage-style tread)	1924-34	82.80	ea
BS919a	3.50x19" tyre (Avon Sidecar Triple Duty MkII)	1924-34	72.00	ea
BS919c	3.50x19" tyre (Cheng Shin)	Trials	66.00	ea
BS917	4.00x17" tyre (Longstone original 1930's pattern tread)	1934-39	94.80	ea
BS917e	4.00x17" tyre (Excelsior)	1934-39	193.20	ea
BS929	19" inner tube	1924-34	10.90	ea
BS927	17" inner tube	1934-39	11.80	ea
BS948	400/425/450 x 18" inner tube	Van	11.50	ea
BS948h	400/425/450 x 18" inner tube (heavy duty)	Special	18.90	ea
BS939	19" rim tape	1924-34	2.90	ea
BS937	17" rim tape	1934-39	2.90	ea
BS914	Dust cap nut adaptor (to fit original dust caps; nickel/chrome)	All	2.90	ea
BS923	Tyre valve cap – plain top	All	.90	ea
BS924	Tyre valve cap – slot top	All	.90	ea
BT980s	Footpump (single)	All	5.20	ea
BT980d	Footpump (heavy-duty double barrel)	All	13.60	ea

BODYWORK

Radiator

BD42	Radiator top hose (Chummy, etc)	1923-28	5.20	ea
BD43	Radiator bottom hose (Chummy, etc)	1923-28	5.90	ea
BD103	Radiator top hose (late Chummy, Box, etc)	1928-34	5.40	ea
BD122	Radiator bottom hose (late Chummy, Box, etc)	1928-34	5.95	ea
BD43	Radiator top & bottom hoses (Ruby, etc)	1934-39	4.50	ea
BD44	Enots radiator hose clip (nickel/brass)	1923-39	10.80	ea
BD44j	Zinc-plated hose clip	All	.65	ea
BD100	Radiator drain tap	All	15.30	ea
BD46	Fibre washer for above	All	.15	ea
BD40	Radiator cap (1¼" dia thread)	1923-29	34.60	ea
BD180	Radiator cap (1½" dia thread)	1929-32	34.60	ea
BD180c	Radiator cap (1½" dia thread, chrome-plated)	1930-32	37.80	ea
BD241	Radiator cap, chrome winged type	1932-34	20.80	ea
BD241m	Radiator cap, chrome winged type for motometer	1932-34	37.80	ea
BD241s	Spare seal for above	1932-34	1.00	ea
BD279	Radiator cap, brass under cowl type	1934-39	21.70	ea
BD941w	Boyce motometer (chrome with wreath border)		84.90	ea
BD941c	Calormeter as BD941w (chrome with plain border)		84.90	ea
BD941b	Calormeter as BD941w (brass with plain border)		84.90	ea
BD98w	Radiator winged wheel badge (nickel/chrome)	1923-32	25.90	ea
BD282w	Radiator winged wheel badge (cowled radiator)	1934-39	25.90	ea
BD282a	Arrow badge for cowled radiator	1934-39	10.80	ea
BD943	'Austin' radiator script (state aluminium/nickel/chrome)	1926-34	25.90	ea
BD944	'Austin Seven' radiator script	1934-39	30.30s	ea
BD951	Radiator core bottom support brackets (early Chummy, etc)	1923-28	34.50	pr
BD952	Radiator core bottom support brackets (late Chummy, etc)	1928-30	34.50	pr
BD952	Radiator core bottom support brackets (Box, etc)	1930-34	34.50	pr

Exterior

C1-36c	Bonnet catch (Chummy, Nippy, etc.)	1923-30	15.80	ea
--------	------------------------------------	---------	-------	----

BM70	Brake pedal pivot shaft nut (early)	1923-28	.50	ea	BC8	Manifold stud, medium (EN16T)	1923-32	.95	ea
2K3997	Brake pedal pivot shaft nut (late)	1928-36	.20	ea	BC9	Manifold stud, long (EN16T)	1923-32	1.35	ea
BN2	Nut for brake pedal shaft	All	.40	ea	BC10	Manifold stud, short (EN16T)	1923-32	1.05	ea
BN3	Brake/clutch pedal metal pad	1923-34	12.30		BC76	Manifold stud, standard (EN16T)	1932-39	.95	ea
BN4	Brake/clutch pedal pad conical nut	1923-34	2.40	ea	BC11	Manifold nut (brass)	All	.75	ea
BN903	Brake/clutch pedal rubber (Chummy/Box)	1923-34	4.90	ea	BC12	Manifold washers	All	.30	set 7
BN96	Brake/clutch pedal rubber (Ruby)	1934-39	4.90	ea	BE31	Inlet manifold top bolt	1923-32	.55	ea
BF978	Accelerator pedal rubber	1934-39	3.50	ea	BC9c	Up-draught manifold studs, brass nuts & washers	1923-32	13.80	set 7
BN96c	Pedal rubber set	1934-39	13.20	set	BC76c	Side-draught manifold studs, brass nuts & washers	1932-39	12.00	set 7
BF26	Accelerator shaft spring (up-draught carb)	1923-32	4.60	ea	BC8s	Manifold stud, medium (stepped)	as req'd	2.60	ea
BF82	Accelerator shaft spring (side-draught carb)	1932-39	4.50	ea	BC9s	Manifold stud, long (stepped)	as req'd	2.85	ea
BN39	Clutch pedal spring (3-speed gearbox)	1923-32	4.90	ea	BC10s	Manifold stud, short (stepped)	as req'd	2.20	ea
Shock Absorbers					BC76s	Manifold stud, standard (stepped)	as req'd	2.60	ea
BU5b	Front shock absorber centre bolt	1925-39	9.00	ea	BE50	Exhaust downpipe	1923-32	45.00	ea
BU6	Nut & lock nut for BU5b	1925-39	.90	ea	BE52a	Exhaust flange gasket	All	1.75	ea
BU8	Star spring plate	1925-39	6.20	ea	BE53c	Exhaust flange bolts & nuts	All	4.80	set 4
BU9	Friction disc (oiled beechwood)	All	7.70	ea	BE971p	Plate for making 'banana' exhaust system	Special	11.90	ea
BU9a	Friction disc (high friction)	All	4.40	ea	BE51	Plate for exhaust downpipe	Special	4.60	ea
BU36	Front axle link bolt	1927-38	6.80	ea	Fan Gear				
BU43c	Nuts & washers for BU36	1925-39	.90	set	BD39	Fan belt (magneto engine)	1923-28	7.60	ea
BU40	Domed link bolt with peg	1925-39	4.35	ea	BD109	Fan belt (coil engine)	1928-39	6.80	ea
BU47	Nut & locknut for above (per pair)	1925-39	.35	1	BD198	Fan belt, wide (sports/export models)	1929-39	7.80	ea
BU34a	Centre bush (front/rear arm)	1925-39	1.30	ea	BD21	Fan blade (magneto engine)	1923-28	34.00	ea
BU2r	Front shock absorber assembly (improved design)	All	133.00	ea	BD105	Fan blade (coil engine)	1928-39	26.00	ea
BU2s	Front shock absorber assembly (sports/racing)	Sports	139.00	ea	BD23	Fan blade screw & washer	All	1.55	ea
BU23	Rear shock absorber arms (long)	1925-34	39.00	ea	BD25	Top fan pulley (magneto engine; second-hand)	1923-28	31.80	ea
BU64	Rear shock absorber arms (short)	1934-39	38.90	pr	BD106	Top fan pulley (early coil engine)	1928-32	30.50	ea
BU923	Rear shock absorber assemblies (improved design; pair)	1925-34	123.00	pr	BD220	Top fan pulley (late coil engine)	1932-39	30.50	ea
BU24b	Rear shock absorber centre bolt	1925-39	9.00	ea	1A903	Top fan pulley (wide, sports/export) with bushes	1929-32	26.20	ea
BU25	Nut & locknut for BU24b	1925-39	1.20	pr	BD33	Top fan pulley felt seal	All	.70	ea
BU30	Spring plate	1925-39	3.20	ea	BD49/50	Top fan pulley bushes	1923-36	10.70	pr
BU65	Brass disc (rear only)	1928-39	3.20	ea	BD28	Fan spindle (magneto engine)	1923-28	6.40	ea
BU27	Rear shock absorber spring	1925-39	3.60	ea	BD108	Fan spindle (coil engine, long)	1928-32	9.80	ea
BU28	Spring cup (inner)	1925-39	1.90	ea	BD221	Fan spindle (coil engine, short)	1932-39	5.70	ea
BU29	Spring cup (outer)	1925-39	2.00	ea	BD34	Fan spindle bracket (magneto engine)	1923-28	18.00	ea
BU49	Connecting link (front & rear, short – 1¼")	1929-39	6.50	ea	BD29/30	Fan spindle washers (steel & brass)	All	.90	pr
BU66	Connecting link (Ruby etc rear, medium – 2¼")	1934-39	8.80	ea	BD31/32	Castle nut (second-hand) & split pin for above	All	.45	ea
B8-6	Connecting link (sports/export rear, long – 3¼")	Sports	9.10	ea	BD68c	Fan spindle cotter, washer & nut	All	3.90	ea
BU50	Rubber bush for connecting links	1929-38	.90	ea	BX1	Fan spindle grease nipple	All	.80	ea
BU12	Fibre washer for BU50	1925-38	.15	ea	BD26	Bottom fan pulley (magneto engine)	1923-28	18.80	ea
BU14	Key washer	1925-39	.45	ea	BD27	Fan pulley taper pin	1923-28	2.70	ea
Wheels & Tyres					BD107	Bottom fan pulley (coil engine)	1928-39	16.20	ea
BS7c	Wheel centre (for 6" brake cars)	1923-26	198.00	ea	BD197	Bottom fan pulley (wide, sports/export)	1929-39	49.90	ea
BS14c	Wheel centre (with Austin script)	1926-31	198.00	ea	BD111	Bottom fan pulley nut	1928-39	.40	ea
BS925	'Staybrite' wheel centre / hub cap (chrome-plated brass)	1931-36	16.20	ea	BD112	Bottom fan pulley spring washer	1928-39	.10	ea
BS928	Wheel centre (hub cap)	1936-39	21.60	ea	BD169	Bottom fan pulley felt seal	1928-39	1.20	ea
BS6	Wheel nut (manganese bronze)	All	2.50	ea	Starting Handle Components				
BS6s	Wheel nut (stainless steel)	Special	3.25	ea	BD14	Starting handle (mag engine)	1923-28	63.00	ea
BL23e	Wheel stud (EN24) & rivet	1923-26	4.30	ea	BD1s	Starting handle brass sleeve	All	11.00	ea
BL23	Wheel stud & rivets	All	4.15	ea	BA18	Felt seal for starting nut (starter dog; magneto)	1923-28	1.95	ea
BO54s	Wheel stud, long (EN24) & rivets	Special	4.90	ea	BA18a	Starter dog lip seal (modern replacement)	1923-28	2.40	ea

BB36	Starting nut (magneto)	1923-28	OOS	
BB41	Starting nut (early coil)	1928-31	OOS	
BT952	Starting dog (magneto) box spanner	1923-28	14.30	ea
BB52	Starting nut (starter dog), coil	1931-39	14.30	ea
BB37	Starting nut lockwasher	All	.50	ea
BD202	Starting handle shaft (7 ⁷ / ₈ "	1931-32	23.40	ea
BD219	Starting handle shaft (7 ¹ / ₈ "	1932-34	23.40	ea
BD276	Starting handle shaft (14 ¹ / ₄ "	1934-39	25.90	ea
BD8	Starting handle spring (magneto)	1923-28	2.50	ea
BD120	Starting handle spring (early coil)	1928-31	2.60	ea
BD205	Starting handle spring (later coil, short)	1931-34	2.85	ea
BD277	Starting handle spring (Ruby, long)	1934-39	2.95	ea
BD201c	Cotter, washer & nut	1928-39	2.40	ea

Fuel System

BE3a	Petrol cap, screw-on type (scuttle tank)	1923-27	16.80	ea
BE20	Petrol cap, spring clip type (scuttle tank)	1927-30	32.40	ea
BE3b	Petrol cap, screw-on type (scuttle tank)	1930-32	30.20	ea
BE113	Petrol filler cap (rear tank)	1932-39	32.40	ea
BE913	Fuel filler pipe grommet	1934-39	9.80	ea
BE962	'Prima' petrol dipstick (4 gallon, angled)	1923-30	34.60	ea
BE964	'Prima' petrol dipstick (4 gallon, straight)	1930	33.60	ea
BE965	'Prima' petrol dipstick (5 gallon, straight)	1930-32	33.60	ea
BE36	Petrol tap	1923-30	24.50	ea
BE103s	Petrol tap cork seals	1930-32	2.70	pr
BE103a	Petrol tap adaptor (tap not included)	1930-32	26.90	ea
BE35p	Copper petrol pipe	All	1.50	foot
BE35n	Nipple & nut for above	All	4.75	ea
BE24f	Filter for Zenith 22FZ carburettor	1923-32	8.70	ea
BE24s	Zenith 22FZ u/d carb spindle	1923-29	16.20	ea
BE24c	Zenith 22FZ u/d carb choke flap	1923-32	13.00	ea
BE24g	Zenith 22FZ choke flap spring	1923-32	5.40	ea
BT8	Jet key for Zenith 22FZ carburettor	1923-32	7.80	ea
BE118s	Zenith 26VA s/d carb spindle	1932-39	25.90	ea
BE118so	Zenith 26VA s/d carb spindle (oversize)	1932-39	15.80	ea
BE118e	Zenith 26VA emulsion block gasket	1932-39	.80	ea
BE118g	Zenith 26VA choke flap springs	1932-39	3.90	pr
BE118b	Zenith 26VA float chamber bolts	1932-39	5.20	pr
BE149b	Zenith 26VA banjo bolt	1932-39	7.80	ea
BE149u	Zenith 26VA banjo bolt union	1932-39	11.40	ea
BE149w	Zenith 26VA banjo fibre washer	1932-39	.15	ea
BT862	Zenith 26VA diagram & technical notes	1932-39	1.40	ea
BE28	Carb / inlet manifold gasket, u/d	1923-32	.40	ea
BE122a	Carb / inlet manifold gasket, s/d	1932-39	.75	ea
BE210d	AC petrol pump Model T diaphragm	1934-39	11.30	ea
BE210t	AC petrol pump Model T top cap seal	1934-39	.90	ea
BA162c	Petrol pump mounting stud, nut & washer	1932-39	1.60	ea
BE124	Petrol pump / crankcase gasket	1932-39	.45	ea
BE124p	Petrol pump aperture blanking plate	Special	1.70	ea
BE252	Fuel filler hose	1934-39	11.70	ea
BE134	Rear petrol tank drain plug	1933-39	4.90	ea
BE134m	Rear petrol tank drain plug with magnetic insert	1933-39	8.30	ea

BM114	Radius arm nut	All	2.90	ea
BM115	Radius arm spring washer	All	.10	ea
B8-63/4e	Radius arm ends for lowered suspension	Sports	142.00	pr
9C161	Bolt, nut & spring washer for above	Sports	5.90	ea
BR48c	Body mounting brackets	1928-34	24.00	set
BR947	Cow horn bracket	1923-34	58.00	pr
BR948	Cow horn fixing bolts	1923-34	.50	ea
BR947u	Cow horns for repro Ulsters built on Ruby chassis	Special	65.00	pr
BN25	Rear brake cable guide & nut	1923-34	6.45	ea
BN121	Rear brake cable pulley	1934-39	5.50	ea
BN122	Clevis pin for above	1934-39	.55	ea
9E93	Rear brake cable brackets for use with flattened springs	Sports	3.85	pr
1A5374	Front bumper horseshoe bracket	1934-39	35.30	ea
1A5523	Torque tube hanger brackets (late Ruby)	1937-39	2.45	pr
2H1051	Silentbloc bush for torque tube socket	1936-39	23.30	ea
BR953	Rear axle bump stop (Box, etc)	1931-34	5.20	ea
BR153	Low frame rear axle bump stop	1934-39	11.60	ea
BX1	Straight grease nipple (1 ¹ / ₈ " BSP)	All	.80	ea
BR51	Angled grease nipple (1 ¹ / ₈ " BSP)	All	.95	ea
2H1129	Angled grease nipple (5 ⁵ / ₁₆ " BSF for Girling front axle)	1936-39	1.20	ea
Steering & Pedals				
BM24r	Raked steering box (Ulster/Cup)	Sports	265.00	ea
BM17c	Steering column clamp bracket	1924-30	32.40	ea
9E917c	Steering column clamp bracket (Ulster)	Sports	41.00	ea
BM133	Steering column top felt bush	1928-39	2.20	ea
BM37	Steering box adjuster lockwasher	1923-36	.40	ea
BM52a	Steering box double tab washer	1923-36	.65	ea
2K6154	Steering box tab washer (late Ruby)	1936-39	.35	ea
BM53	Steering box cover bush	1923-36	19.50	ea
BM54	Steering box cover felt seal	1923-36	.80	ea
2K5288	Steering box cover cork seal	1936-39	.80	ea
BM56	Steering box cover gasket	1923-36	.80	ea
2K5286	Balls for worm bearing (set of 34)	1936-39	5.60	set
BM74/75	Horn button & spring (state nickel or chrome)	1925-32	28.10	ea
BM3	Steering wheel clamp bolt	1923-28	.55	ea
BM127	Steering wheel retaining nut	1928-39	1.90	ea
BM128	Gas/ignition control plate	1923-32	30.30	ea
BM12	Control lever friction block	1923-34	2.35	ea
BM13	Control lever screw	1923-34	2.75	ea
BM14	Control lever spring	1923-34	.95	ea
BM12c	Control lever blocks, screws & springs	1923-34	12.00	set
BM129	Throttle control stator tube	1923-34	17.30	ea
BM130	Ignition control stator tube	1923-34	18.30	ea
BM136	Control bracket stator tube	All	16.30	ea
BM57/9	Control levers with bolts & nuts (pair)	1923-34	36.80	pr
BM96a	Steering arm (incl. p&p)	All	75.00	ea
9C134a	Steering arm (lowered suspension)	Sports	75.00	ea
BM107c	Drag link set (ball pin, cups, spring, castle nut & split-pin)	All	14.60	ea
BM67	Brake pedal pivot shaft (early)	1923-28	8.50	ea
BM140	Brake pedal pivot shaft	1928-36	8.50	ea
BM68	Brake pedal shaft taper washer	1923-36	6.30	ea

BG984	6V flasher unit		6.80	ea
BG984a	12V flasher & buzzer unit		8.50	ea
BG985	Indicator buzzer		4.80	ea
BG982	Reflector, chrome bezel 2" dia, rear stud fixing		11.90	ea
BG307	Brake light switch (Lucas pattern)	1934-39	21.90	ea
BG307a	Brake light switch & cover	1934-39	8.60	ea
BG922	6V 30/24W pre-focus bulb		5.60	ea
BG923p	6V 21/5W bulb (parallel pins)		3.00	ea
BG923o	6V 21/5W bulb (offset pins)		1.45	ea
BG924c	6V 5W SCC bulb		1.25	ea
BG924b	6V 5W SBC bulb		1.25	ea
BG926	6V 5W small bulb for repro sidelight	1934-39	1.35	ea
BG927	6V 10W SCC bulb		1.25	ea
BG928c	6V 18W SCC bulb		1.25	ea
BG928b	6V 21W SBC bulb		1.70	ea
BG247b	Panel light bulb (6V 3W SCC)		1.50	ea
BG929	6V festoon bulb for trafficators		1.25	ea
BG930	Bulb holder to fit 15mm diameter parallel pin bulb		4.50	ea
BG931	Bulb holder to fit 15mm diameter SCC bulb		4.70	ea
BG933p	12V 21/6W bulb (parallel pins)		2.65	ea
BG933o	12V 21/6W bulb (offset pins)		1.60	ea
BG936	12V 4W small bulb for repro sidelight		1.00	ea
BG937	12V 10W SCC bulb		.90	ea
BG938	12V 21W SCC bulb		1.25	ea
BG938a	12V 21W SCC bulb (amber)		1.80	ea
BG952	Lucas trafficator base seal	1934-39	3.20	ea

CHASSIS

BR13c	Spring shackles (c/w grease nipples, nuts & tab washers)	All	98.70	axle
BR14	Spring shackle pin bush	All	3.20	ea
BR15	Spring shackle nuts	All	.20	ea
BR17	Spring shackle lockwasher	All	.40	ea
BR58	Rear spring/shock absorber pin	1925-38	16.90	ea
BR59	Nut & locknut for above	1924-39	.35	pr
BR24	Rear spring pin bush	All	2.95	ea
BR26c	Rear spring pin cotter, washer & nut	All	2.40	ea
BR80	Spring U-bolt (front)	All	16.20	ea
BR21	Nuts for above	All	.20	ea
BR42	Front spring U-bolt tab washer	All	.65	ea
BR77	Spring U-bolt (rear)	All	16.20	ea
BR30	Nuts for above	All	.20	ea
BR31	Rear spring U-bolt tab washer	All	.60	ea
BR75	Spring U-bolt stiffening plate (rear)	1927-39	1.85	ea
BR32c	Rear spring bolt & nut (early)	1923-26	3.90	ea
BR64c	Rear spring bolt & nut (late)	1926-39	3.75	ea
BR34	Rear spring bolt lockwasher	All	.50	ea
BR63	Rear spring packing (thick)	All	1.60	ea
BR81	Rear spring packing (thin)	All	1.05	ea
BM123	Radius arm ball joint	All	84.00	ea
BM116	Radius arm ball pivot bushes	All	8.50	pr
BM197	Radius arm waisted bolt	All	OOS	
BM196	Radius arm waisted bolt spring	1934-39	2.95	ea

BE135	Rear petrol tank drain plug fibre washer	1933-39	.60	ea
BF26	Accelerator shaft spring (up-draught carb)	1923-32	4.60	ea
BF82	Accelerator shaft spring (side-draught carb)	1932-39	4.50	ea
BF46j	Carburettor connecting link ball joint	1934-39	11.90	ea
BE903	In-line fuel filter		1.60	ea
BT976	Petrol tank repair patch		8.60	ea
BT978	Ethanolmate petrol additive/corrosion inhibitor (treats 55 gal)	All	13.90	ea

Gaskets

BA901	Magneto engine gasket set	1923-28	55.10	set
BA902	Early Coil engine gasket set	1928-30	50.70	set
BA903	Middle Coil engine gasket set	1930-32	50.40	set
BA904	Late Coil engine gasket set	1932-36	49.70	set
BA905	Late Ruby engine gasket set	1936-39	50.00	set
BA918	Magneto engine felt seal set	1923-28	5.75	set
BA935	Crankcase fibre washer set (magneto / coil)	All	2.15	set
BA3	Timing gear case gasket (magneto)	1923-28	1.95	ea
BA6	Timing gear cover gasket (magneto)	1923-28	1.95	ea
BA19	Starting dog felt housing gasket	1923-28	1.05	ea
BA120	Nosecone gasket	1928-39	.70	ea
BA72	Sump gasket	All	1.20	ea
BA103	Oil pump gasket	All	.40	ea
BA43	Oil pump cover gasket	All	.30	ea
BB11	Rear main bearing housing gasket (thin)	All	.30	ea
BB48	Oil seal plate gasket (thick)	All	.55	ea
BC29	Cylinder head gasket (low comp head - Payen)	1923-36	35.40	ea
BC29r	Cylinder head gasket (Ricardo head)	Special	36.00	ea
1A912	Cylinder head gasket (high comp head - Payen)	1936-39	35.60	ea
BC19	Water outlet manifold gasket (early)	1923-36	.50	ea
9E45	Water outlet manifold gasket (late)	1936-39	.45	ea
BC13	Cylinder block base gasket	All	.90	ea
BD48	Water inlet manifold gasket	All	.80	ea
BA34	Camshaft rear bearing gasket (early)	1923-32	.25	ea
BA170	Camshaft rear bearing gasket (late)	1933-39	.25	ea
BC38	Valve chest cover cork gasket	1923-30	1.90	ea
BC72	Valve chest cover cork strip	1930-39	1.80	ea
BE22a	Inlet / exhaust manifold gasket	1923-32	.75	ea
BE28	Carb / inlet manifold gasket, u/d	1923-32	.40	ea
BE122a	Carburettor / manifold gasket, s/d	1932-39	.75	ea
BE29a	Exhaust manifold gasket	All	2.75	ea
BE52a	Exhaust flange gasket	All	1.75	ea
BE124	Petrol pump / crankcase gasket	1932-39	.45	ea
BG102	Dynamo gasket	1928-39	.30	ea
BG4	Dynamo housing gasket (magneto)	1923-28	.95	ea
BG106	Dynamo housing gasket (coil)	1928-39	.40	ea
BG113	Dynamo housing cover gasket	1928-39	.25	ea
BT973	Blue Hylomar		5.70	tube

TRANSMISSION

Flywheel & Clutch

BJ2	Rear crankshaft key	All	.90	ea
BJ3	Flywheel nut (1 ¹ / ₈ ")	1923-29	3.90	ea

BJ4	Flywheel nut lockwasher (1 ¹ / ₈ "	1923-29	.50	ea	BG139r	Rubber insulator cover for coil or distributor cap	1928-39	.30	ea
BJ29	Flywheel nut (1 ⁵ / ₁₆ "	1929-39	3.90	ea	BG140c	Distributor cap (c/w acorn nuts & split washers)	1928-39	29.90	ea
BJ30	Flywheel nut lockwasher (1 ⁵ / ₁₆ "	1929-39	.50	ea	BG140a	Short acorn nut for distributor cap	1931-39	.60	ea
BJ24g	Starter ring gear, shrink-on replacement (early)	1924-32	54.50	ea	BD230w	HT lead terminal split washer	1928-39	.45	ea
BJ31g	Starter ring gear, shrink-on replacement (late)	1932-39	54.50	ea	BG140p	Contact breaker points (DJ4)	1931-34	11.60	ea
BJ21	Clutch thrust bearing (3-speed gearbox)	1923-32	125.00	ea	BG294p	Contact breaker points (DK4)	1934-39	11.40	ea
BJ41	Clutch thrust race (4-speed gearbox)	1932-39	59.50	ea	BG140t	'Top hat' bushes for points (DJ4/DK4)	1931-39	3.70	pr
BJ7	Clutch centre plate rivets	1923-36	1.95	set	BG140d	Condenser	1928-39	12.20	ea
BJ8-1c	Clutch linings, c/w rivets (6 rivets/lining)	1923-31	18.20	set	BG140r	Rotor arm (DJ4)	1931-34	10.80	ea
BJ8-2c	Clutch linings, c/w rivets (12 rivets/lining)	1931-36	21.40	set	BG294r	Rotor arm (DK4)	1934-39	10.70	ea
1A3238c	Clutch linings, c/w rivets (Borg & Beck)	1936-39	19.60	set	BG294b	Distributor base plate (DK4)	1934-39	29.90	ea
1A3244c	Clutch linings, c/w rivets (Newton Bennett)	1938	19.70	set	BG294u	DK4 spindle bush	1934-39	4.95	ea
BJ9c	Clutch lining rivets	1923-36	4.35	set	BG140g	Distributor gear (Lucas)	1928-39	19.50	ea
BT925	Rivet punch	All	21.60	ea	BG294g	Distributor gear (Bosch)	1928-39	14.40	ea
BJ12	Clutch pressure springs	All	9.10	set	BG115s	Grub screw for CAV & Lucas switch panels	1923-32	.95	ea
9E912	Double (inner) clutch springs	Sports	8.40	set	BG315a	PLC5 ignition switch (incl. keys & mounting clip)	1934-39	76.40	ea
BJ14	Clutch levers (3-speed gearbox)	1923-32	31.10	set	BG160c	Ignition switch retaining wire clip and gasket	1932-39	5.90	ea
BJ33	Clutch levers (4-speed gearbox)	1932-39	31.10	set	BG160k	Ignition spade key	1932-39	.95	ea
BJ13	Clutch lever posts	1923-36	22.70	set	BG115b	Ignition bulb (6V)	1928-32	1.10	ea
1A3239	Clutch lever posts	1936-39	22.70	set	BG163a	Ignition warning light (6V)	1932-39	28.20	ea
BJ15	Clutch lever pins	All	2.10	set	BG163b	Ignition bulb (2.5V)	1932-39	.90	ea
BJ35	Clutch mouse-trap springs	1932-39	4.20	set	BT983	Ignition spark tester		5.80	ea
BJ40	Spring clip for withdrawal collar (second-hand)	1932-39	2.40	ea	Lamps				
BJ43	Clutch thrust spring (2nd-hand)	1932-39	3.70	ea	BG149g	Stipolite headlamp glass	1931-32	8.40	ea
BJ45	Collar for above (2nd hand)	1932-39	2.40	ea	BG164g	Reeded headlamp glass	1932-34	8.40	ea
BJ17	Clutch cover plate bolt (3-speed gearbox)	1923-32	.45	ea	BG310g	Headlamp glass (Ruby, etc)	1934-39	51.90	ea
BJ37	Clutch cover plate bolt (4-speed gearbox)	1932-39	.40	ea	BG193c	Headlamp glass wire retaining clip		.45	ea
BJ18	Clutch cover plate tab-washer	All	.30	ea	BG193p	Headlamp swivel cup ⁵ / ₈ " hole	1923-34	3.00	ea
BJ18c	Clutch cover plate tab-washers (6)	All	1.65	set	BG193q	Headlamp swivel cup (Ruby)	1934-39	3.00	ea
BT921	Clutch cover plate assembly bolt	All	.40	ea	BG193h	Headlamp hollow bolt ⁵ / ₈ " dia, nuts, washers,etc	1929-34	9.60	ea
BN3	Clutch pedal pad	1923-34	12.30	ea	BG193b	Headlamp bolt & nut	1934-39	11.90	ea
BN4	Conical nut for pedal pad	1923-34	5.50	ea	BG263	Foot operated dip switch	1934-39	23.70	ea
BN36c	Clutch pedal cotter, washer & nut	1923-32	2.40	ea	BG262	Front sidelight	1934-39	48.90	ea
BN39	Clutch pedal spring (3-speed gearbox)	1923-32	4.90	ea	BG262q	Front sidelight swivel cup	1934-39	3.00	ea
BA166	Flywheel pit cover (2nd-hand)	1932-39	7.70	ea	BG87	Rear lamp with prismatic lens (Chummy/Box)	1923-33	72.70	ea
BT920	Flywheel puller	All	16.90	ea	BG87r	Rear lamp with high visibility lens (Chummy/Box)	1923-33	53.50	ea
Gearbox					BG87a1	Rear indicator lamp (as BG87 but with amber lens)		72.70	ea
BH85	Clutch pedal shaft taper pin	All	1.60	ea	BG87a2	Rear indicator lamp (as BG87r but with amber lens)		40.90	ea
BH3c	Gasket set (3-speed gearbox – early)	1923-27	4.60	set	BG87g	Replacement glass for rear lamp with prismatic lens	1923-33	9.60	ea
BH125c	Gasket set (3-speed gearbox – late)	1927-32	4.45	set	BG987	Improved visibility lens for rear lamp	1923-34	9.40	ea
BH6	Top cover gasket (3-speed gearboxes)	1923-32	.90	ea	BG987s	Replacement clear sleeve for rear lamp	1923-33	9.80	ea
BH7	Top cover studs (3-speed gearboxes)	1923-32	1.15	ea	BG988	Bracket for rear lamp (rear wing fixing)	1923-26	10.80	ea
BH8/9	Nuts & spring washers for above	1923-32	.60	set	BG989	Bracket for rear lamp (numberplate fixing)	1926-34	15.60	ea
BH16	Gear-lever gate gasket (3-speed gearbox)	1923-29	.70	ea	BG197	Rear light ('pork-pie' type; late Box, Ruby, etc.)	1933-39	66.70	ea
BH17	Gear-lever gate screw	1923-29	.85	ea	BG197g	Replacement glass for 'pork-pie' lamp	1933-39	10.30	ea
BH226c	Gasket set (4-speed synchro gearbox)	1933-39	5.20	set	BG905	Auxiliary stop/tail lamp		17.10	ea
BH226	Top cover gasket (4-speed synchro gearbox)	1933-39	1.20	ea	BG980	Indicator system (4 lamps with mounting brackets, 4 bulbs [6V/12V], flasher/buzzer unit, column mounted switch. Suitable for positive or negative earth)	All	108.60	set
BH142	Top cover bolts (4-speed gearboxes)	1932-39	.35	ea	BG907	Direction indicator lamp (state orange or clear lens)		18.70	ea
BH19	Inspection cover screw	1923-32	.50	ea	BG983	Indicator switch (steering column)		17.20	ea
BH58a	Front oil lip seal (modern replacement)	1923-29	2.80	ea					
BH66	Rear felt seal (3-speed)	1923-32	1.70	ea					

BG99	Dynamo fixing bolt (¼ BSF)	1928-39	.40	ea
BG100	Dynamo fixing bolt (¼ BSW)	1928-39	.35	ea
BG112	Dynamo housing cover	1928-39	.75	ea
BG113	Dynamo housing cover gasket	1928-39	.25	ea
BG112b	Dynamo housing cover bolt (second-hand)	1928-39	.25	ea
BG102	Dynamo gasket	1928-39	.30	ea
BG141	Dynamo housing long bolt	1928-39	3.40	ea
BM74/75	Horn button & spring (state nickel or chrome)	1925-32	28.10	ea
BG83b	Rist horn badge	1927-36	5.20	ea
BG245a	Wiring loom (braided outer & braided cables) with wiring for indicators, brake lights & dipping headlamps	1934-39	169.00	ea
BD78	Starter/battery cable (heavy duty)	All	2.90	foot
BD95	Battery terminal clamp, positive	All	2.35	ea
BD96	Battery terminal clamp, negative	All	2.35	ea
BD86	Battery cable terminal	All	2.25	ea
BD80	Tinned copper earthing braid	All	3.70	foot
BW984	Battery fixing strap	1934-39	43.20	ea
BG901a	Battery/ignition isolator switch with key	All	9.50	ea
BG901k	Spare key for above		1.10	ea
BG901b	Battery/ignition isolator switch (terminal type)	All	11.50	ea
BT988	Battery hydrometer		3.00	ea
BT989	Battery post & terminal cleaner		2.65	ea
BG941	10A 1" glass fuse		.50	ea
BG942	25A 1" glass fuse		.75	ea
BG944	In-line fuse holder with 20A fuse	All	.95	ea
BG945	20A 1¼" glass fuse	All	.50	ea
BG971	6V 10A DPDT relay (double pole double throw)		11.20	ea
BG972	12V 10A DPDT relay		10.30	ea
BD67	Cable bush & nut	1923-31	10.20	ea
BD123c	Cable grommet pack (21 assorted)	All	3.90	ea
BD289	Double wiring clip		.55	ea
2H161	Wiring harness saddle	1934-39	6.50	ea
Ignition				
BA93	Vernier coupling (mag engine)	1923-28	13.40	ea
BA94	Magneto fixing strap	1923-28	30.20	ea
BA100c	BLIC magneto end cap (nickel)	1923-28	19.50	ea
BA100k	BLIC magneto key	1923-28	1.25	ea
BA100n	BLIC magneto vernier nut	1923-28	.95	ea
BA22	Magneto switch	1923-26	38.90	ea
BF23	Advance/retard control rod ball joint	1923-28	11.90	ea
BG918	Spark plug, Champion 18mm	1923-36	5.75	ea
BG917	Spark plug, NGK 18mm	1923-36	6.20	ea
BG914	Spark plug, NGK 14mm	1937-39	3.45	ea
BG919	Spark plug knurled nut (brass)	All	1.25	ea
BD57	HT lead spade end terminal	All	1.75	ea
BD230	HT lead, black plastic, copper core	All	.80	foot
BD230b	HT lead, yellow/black braided, copper core	All	1.55	foot
BG139	6 volt coil (c/w acorn nut & split washer)	1928-39	21.00	ea
BG939	12 volt coil (c/w acorn nut & split washer)	Special	21.00	ea
BG139a	Long acorn nut for ignition coil	1928-39	1.25	ea
BG139t	Straight push-in terminal for coil or distributor cap	1928-39	1.75	ea

BH42	1st motion shaft ball bearing (3-speed)	1923-32	19.20	ea
BH56	1st motion shaft bearing rollers (3-speed)	1923-32	3.95	set
BH43	3rd motion shaft ball bearing (3-speed)	1923-32	20.40	ea
BH44	Layshaft ball bearings (3-speed)	1923-32	19.20	ea
BH179	1st motion shaft ball bearing (4-speed crash)	1932-33	13.00	ea
BH181	3rd motion shaft ball bearing (4-speed crash)	1932-33	20.40	ea
BH254	1st motion shaft ball bearing (4-speed synchro)	1933-39	23.60	ea
BH258	3rd motion shaft ball bearing (4-speed synchro)	1933-39	29.80	ea
BH178b	Intershaft bush (replaces roller bearing)	1933-39	9.10	ea
BH34	Selector arm fulcrum plate screws	1923-32	.50	ea
BH36/37	Selector ball & spring	All	1.25	pr
BH269/70	Synchromesh ball & spring	1933-39	.90	pr
BH69	Layshaft (3-speed)	1923-32	17.50	ea
BH73/74	Layshaft keys (long & short)	1923-32	2.95	pr
BH183	Nut for gearbox rear flange	1932-39	2.90	ea
BH115	Gearlever knob (small)	1929-32	9.00	ea
BH235	Gearlever knob (large)	1932-39	9.40	ea
2H7145	Gear lever cover grommet	1935-39	12.40	ea
BH30	Gearbox drain plug	All	4.95	ea
BH30m	Gearbox drain plug with magnetic insert	All	8.30	ea
BH29/31	Drain plug fibre washer	All	.60	ea
Speedometer drive				
BH102	Speedo cable drive pinion (3-speed)	1927-32	20.40	ea
BH203	Speedo cable drive pinion (4-speed)	1932-39	20.40	ea
BG49	Speedometer drive spring belt	1924-27	7.70	ea
BG45	Speedo cable 45" (belt-driven)	1924-27	27.90	ea
BG94	Speedo cable 14½"	1927-28	27.20	ea
BG92	Speedo cable 16½"	1927-32	27.30	ea
BG92c	Speedo cable 17½" (Coupe, etc)	1929-31	27.40	ea
9E92	Speedo cable 22"	Ulster	27.70	ea
BG172	Speedo/rev counter cable 45"	Special	27.90	ea
BG277	Speedo cable 51" Magmo (barrel) type speedo	1934-35	28.10	ea
2H1847	Speedo cable 48" Nemag (needle) type speedo	1936-39	28.00	ea
BG44b	Balls for Smiths speedometers (MA/PA, etc)	1924-32	5.10	set
Propshaft				
BP29	Fabric coupling	1923-34	41.90	ea
BP57	Fabric coupling double-ended bolt	1923-34	4.55	ea
BP58/9	Special nuts for BP57	1923-34	.95	pr
BP60	Lockwasher for BP58/9	1923-34	.60	ea
BP60c	Lockwashers for BP58/9	1923-34	2.95	set
BP61	Split-pins for BP58/9	1923-34	.25	set
BP11c	Cardan pin and blocks	1923-33	41.50	set
BP119a	Cardan joint cover (rubber)	1923-33	5.20	ea
BP19	Cardan housing nut	1923-33	.10	ea
BP20	Cardan housing lockwasher	1923-33	.40	ea
BP73s	Hardy-Spicer propshaft to fit SWB cars (gearbox spider to Cardan joint flange)	Special	264.00	ea
BP118s	Hardy-Spicer propshaft to fit LWB cars (gearbox spider to Cardan joint flange)	1932-33	240.00	ea
BP125s	Hardy-Spicer propshaft to fit LWB cars (gearbox spider to 6-hole flange)	1933-34	240.00	ea

BP957	Fixing bolts & nyloc nuts for gearbox spider	Special	3.20	set
BP918	Fixing bolts & nyloc nuts for Cardan joint flange	Special	3.30	set
BP161	Hardy-Spicer propshaft	1934-39	180.00	ea
BP169	Hardy-Spicer u/j needle bearing assembly	1934-39	14.00	ea
BP143	Propshaft D-head bolt (early)	1933-35	1.85	ea
BP144	Nuts for above	1933-35	.05	ea
BP145	Lockwashers for above	1933-35	.35	ea
BP171	Propshaft D-head bolt (late)	1935-39	2.60	ea
BP172	Lockwashers for above	1935-39	.65	ea
BP173	Nuts for above	1935-39	.10	ea

BRAKES

BL57	Brake lever	1926-36	15.80	ea
BL99	Brake lever, longer Austin	1935-36	16.70	ea
1A4133	Brake lever, Girling seal type	1936-39	16.80	ea
BL35c	Brake lever cotter, washer & nut (Austin)	1923-36	2.40	ea
2K5631	Brake lever cotter, washer & nut (Girling)	1936-39	2.60	ea
2K5213	Brake lever felt seal	1937-39	.65	ea
BL76/77	Brake cams	1923-36	29.20	pr
BL69	Brake cam oilite bush	1923-36	1.90	ea
1A4130/1	Brake cams (Girling, front)	1936-39	29.50	pr
1A7263/4	Brake cams (Girling, rear)	1936-39	29.50	pr
1A4126	Brake cam oilite bush (Girling)	1936-39	2.15	ea
BL38	Brake shoe spring (6")	1923-26	2.10	ea
BL58	Brake shoe spring (7")	1926-36	1.10	ea
1A4141	Brake shoe spring (for Girling shoes with studs)	1936-37	1.95	ea
1A4655	Brake shoe spring (for Girling shoes without studs)	1937-39	1.65	ea
1A4150c	Brake lever springs (Girling)	1936-39	15.60	set
BT958	Brake shoe spring hook	All	11.20	ea
BL27	Brake linings (high-friction) & rivets (6"), axle set	1923-26	21.90	1
BL55	Brake linings (high-friction) & rivets (7" x 1"), axle set	1926-32	20.90	1
BL73	Brake linings (high-friction) & rivets (7" x 1¼"), axle set	1932-36	21.90	1
BL56	Rivets for 7" Austin brake linings	1926-36	3.10	set
1A4120	Brake linings (high-friction) & rivets (Girling), axle set	1936-39	22.80	1
BT925	Rivet punch	All	21.60	ea
BL29	Brake shoe pivot (long, threaded), washer & nut	1923-28	4.65	set
BL68	Brake shoe pivot (short, threaded)	1928-36	4.55	ea
BO77	Brake shoe pivot (rivetted)	1923-37	4.55	ea
BL942	Brake backplate (6") c/w rivets	1923-26	20.70	ea
BL965	Brake backplate (7") c/w rivets	1926-36	21.60	ea
BL966	Set of rivets for above	1923-36	1.20	set 6
2K5257	Girling backplate bolt	1936-39	.55	ea
2K5258	Girling backplate lockwasher	1936-39	.55	ea
BL54	Brake shoe (7" x 1")	1926-32	8.20	ea
BL72	Brake shoe (7" x 1¼")	1932-35	15.70	ea
C1-167	Brake shoe (7" x 1¼" – offset pivot)	1935-36	13.25	ea
C1-188/9	Brake shoe (Girling, with spring anchor studs)	1936-37	9.60	pr
C1-312	Brake shoe (Girling, without studs)	1937-39	9.80	ea
BL954	End caps for aluminium brake shoes	1926-35	3.45	set 4
BL53	Brake drum (7" x 1")	1926-32	11.90	ea
BL71	Brake drum (7" x 1¼")	1932-36	16.80	ea
1A4115	Brake drum (Girling)	1936-39	40.80	ea

BP27	Front (taper) end (ball)	1923-29	14.40	ea
BP27s	Front (taper) end ball bearing (sealed)	Special	17.50	ea
BP81	Front (taper) end (A/C)	1929-30	35.70	ea
BP96	Front (taper) end (ball)	1930-39	14.40	ea
BP96s	Front (taper) end ball bearing (sealed)	Special	17.50	ea
BP26	Intermediate (thrust)	1923-29	28.70	ea
BP84	Intermediate (thrust)	1929-30	23.90	ea
BP101	Intermediate (AC thrust)	1930-38	153.00	pr
2K5536	Intermediate (heavy axle; double)	1938-39	135.00	ea
BP25	Gear end (roller)	1923-29	42.50	ea
BP85	Gear end (ball)	1929-34	20.40	ea
BP183	Gear end (roller)	1934-38	66.80	ea
2K5585	Gear end (roller – heavy axle)	1938-39	47.50	ea
BO37	Diff carrier thrust	1923-28	31.90	ea
BO36	Diff carrier ball	1923-28	19.20	ea
BO109	Diff carrier AC thrust	1929-38	55.90	ea
2K5708	Diff carrier (heavy axle)	1938-39	69.60	ea

ELECTRICAL

BG2	CAV DF/DFL/DE dynamo drive gear	1923-28	48.00	ea
BG1b	CAV DF dynamo brushes	1923	7.80	set 3
BG29b	CAV DFL dynamo brushes	1923-28	7.80	set 3
BG29f	CAV DFL front bearing	1923-28	8.00	ea
BG29r	CAV DFL rear bearing	1923-28	3.95	ea
BG29k	CAV DF/DFL dynamo Woodruff key	1923-28	1.25	ea
BG29n	CAV DF/DFL dynamo gear nut	1923-28	.95	ea
BG29c	CAV DF/DFL dynamo end cover	1923-28	39.80	ea
BG8/9	CAV DF/DFL dynamo securing oiler/bolt	1923-28	5.70	ea
BG13	CAV DF/DFL front felt seal	1923-28	1.20	ea
BG98b	CAV DE/DEL dynamo brushes	1928-32	7.80	set 3
BG98f	CAV DE/DEL front bearing	1928-32	6.25	ea
BG98r	CAV DE/DEL rear bearing	1928-32	3.95	ea
BG154b	Lucas C35A dynamo brushes	1932-34	7.80	set 3
BG293b	Lucas C35M dynamo brushes	1934-39	7.80	set 3
BG154f	Lucas C35A / C35M front bearing (sealed)	1932-39	5.90	ea
BG154r	Lucas C35A / C35M rear bush	1932-39	1.30	ea
BG53b	'Bacon slicer' starter motor brushes (CAV, 'lozenge' switch)	1923-26	7.80	set 2
BG953b	'Bacon slicer' starter motor brushes (Lucas, round switch)	1926-29	5.90	set 2
BG88	'Bacon slicer' starter motor switch	1923-29	42.90	ea
BG53f	Starter motor front bearing (some starters)	1924-29	8.60	ea
BG76a	'Bacon slicer' starter terminal cover	1923-29	4.75	ea
BG715	'Bacon slicer' starter Bendix spring	1923-29	21.60	ea
BG56	Bacon-slicer starter bolt (short) & spring washer	1923-29	.85	ea
BG173b	Direct drive starter motor brushes	1929-39	6.50	set 2
BG173c	Spring clip for pinion, direct drive starter motor	1929-39	3.90	ea
BG173s	Starter switch (starter motor under bonnet)	1932-39	33.50	ea
BG3	Dynamo housing (magneto engine)	1923-28	45.00	ea
BG4	Dynamo housing gasket (magneto engine)	1928-39	.95	ea
BG105	Dynamo housing (coil engine)	1928-39	24.50	ea
BG106	Dynamo housing gasket (coil engine)	1928-39	.40	ea

BO47	Hub felt seal plate	All	1.45	ea	BL67	Brake drum retaining countersunk screw	1928-39	.35	ea
BO78	Outer hub grease plug	All	2.20	ea	BK31	Front brake cable	All	29.20	ea
BO92	Hub-clamping screw	1923-38	.50	ea	BK31a	Front brake cable (adjustable)	All	36.90	ea
BO52	Hub retaining nut	1923-38	5.10	ea	BN65	Rear brake cable (fork-ball, adjustable, with clevis pin)	1923-36	29.60	ea
BO53	Hub retaining nut tab washer	1923-38	.60	ea	BN119	Rear brake cable (fork-fork, adjustable, with clevis pins)	1936-39	29.80	ea
2H2381	Hub bearing retaining nut tab washer (late axle)	1938-39	.65	ea	BN18	Brake cable clevis pin	All	.65	ea
BT952	Hub bearing retaining nut box spanner	1923-38	14.30	ea	BN40a	Adjustable brake cable clamp stud & nut	All	1.70	ea
BT24	Hub puller	All	14.20	ea	BN77a	Rear brake cable clevis, pin & clamp	All	11.20	ea
BT953d	Die for outer hub thread (HSS)	All	73.50	ea	BN25	Rear brake cable guide & nut	1923-34	6.45	ea
BO902	Rear hub rebuild kit (gasket, tab washer, Woodruff key, lip seal, split pin)	1923-38	6.25	ea	BN121	Rear brake cable pulley	1934-39	5.50	ea
BO54e	Wheel stud (EN24) & rivet	1923-26	4.30	ea	BN122	Clevis pin for above	1934-39	.55	ea
BO54	Wheel stud & rivets	All	4.15	ea	BN965	Brake cable adjuster		9.50	ea
BO54s	Wheel stud, long (EN24) & rivets	Special	4.90	ea	BK41	Handbrake pawl	1929-31	3.20	ea
BS6	Wheel nut (manganese bronze)	All	2.50	ea	BK25	Handbrake ratchets (uncoupled brakes)	1923-30	6.20	pr
BS6s	Wheel nut (stainless steel)	Special	3.25	ea	BK49	Handbrake ratchets (coupled brakes)	1930-39	6.70	pr
BO23	Diff carrier / halfshaft bush (0.875")	1923-31	3.35	ea	BK14	Handbrake pivot	1923-30	3.25	ea
BO98	Diff carrier tab washer	1928-39	.55	ea	BK15	Nut for above	1923-30	.10	ea
BO28	Early diff carrier tab washer	1923-28	.35	ea	BK17	Handbrake bracket clevis pin	1923-30	.60	ea
BO2	Axle case side tube gasket	1923-38	.70	ea	BK52	Front brake cable swivel (Box, etc)	1930-34	7.60	ea
BO7	Axle case centre to side tube lockwasher	All	.35	ea	1A5152	Front brake cable swivel (Ruby, etc)	1934-39	7.60	ea
BO10	Axle case to torque tube lockwasher	1923-29, 1930-39	.55	ea	BK68c	Front brake swivel fork, pin & nut	1930-39	32.40	ea
BO114	Adjuster plate gasket	1929-38	.30	ea	BK55	Front brake cable swivel clevis pin	1930-39	.70	ea
BO11	Back axle drain plug	All	4.90	ea	BK66	Handbrake adjusting wingnut	1930-39	9.80	ea
BO11m	Back axle drain plug with magnetic insert	All	8.30	ea	BK72	Handbrake roller joint pin	1930-39	.65	ea
BO12	Drain plug fibre washer	All	.60	ea	BK943	Handbrake gaiter (Box, etc; various colours)	1930-34	13.00	ea
BO74	Winkley pattern oiler	1923-	12.10	ea	3A9097	Handbrake gaiter (Ruby, etc; various colours)	1934-39	15.60	ea
BP32	Pinion flange nut	1923-39	.45	ea	BK944	Handbrake gaiter plate (Box, etc)	1930-34	1.95	ea
BP33	Pinion flange nut tab washer	All	.40	ea	BN2	Brake pedal pivot shaft nut	All	.30	ea
BP34	Pinion shaft Woodruff key	1923-39	.70	ea	BN3	Brake pedal pad	1923-32	12.30	ea
BP16	Pinion flange adjusting nut lockwasher	1923-30	.55	ea	BN4	Conical nut for pedal pad	1923-32	5.50	ea
BP116	Pinion bearing retaining nut lockwasher	1931-39	.50	ea	BM67	Brake pedal pivot shaft (early)	1923-28	8.50	ea
BP107	Torque tube to axle case shims, 6 thou (pack of 6)	as required	3.00	pack	BM140	Brake pedal pivot shaft	1928-36	8.50	ea
BP71	Torque tube bracket thin locknut	1923-36	5.10	ea	BM68	Brake pedal shaft taper washer	1923-36	6.30	ea
BP70	Torque tube bracket locknut tab washer	1923-36	.55	ea	BM70	Brake pedal pivot shaft nut (early)	1923-28	.50	ea
BP23	Torque tube front felt seal	1923-29	1.15	ea	BM70b	Brake pedal pivot shaft nut (late)	1928-36	.20	ea
BP95a	Packing gland for torque tube (with modern lip seal)	1930-39	72.90	ea	BN5a	Brake pedal jaw (yoke)	All	10.50	ea
1A5523	Torque tube hanger brackets (late Ruby)	1937-39	2.45	pr	BN6	Brake pedal clevis pin	All	.65	ea
2H1051	Silentbloc bush for torque tube socket	1936-39	23.30	ea	BN8	Brake pedal rod (uncoupled brakes, 1 1/2")	1923-30	5.90	ea
BO903e	Back axle rebuild kit (early banjo axle)	1923-26	33.90	ea	BN45	Brake pedal rod (coupled brakes)	1930-39	OOS	
BO903v	Back axle rebuild kit (vintage banjo axle)	1926-29	31.00	ea	BN9	Brass wingnut (foot brake adjustment)	1923-36	9.80	ea
BO903s	Back axle rebuild kit (screw-in torque tube axle)	1929-30	27.20	ea	1A7633	Girling rear brake expander rubber boot	1938-39	5.95	ea
BO903b	Back axle rebuild kit ('Long-nose' banjo axle)	1930-32	30.00	ea	BG307	Brake light switch (Lucas pattern)	1934-39	21.90	ea
BO903d	Back axle rebuild kit (D-type axle)	1932-38	27.30	ea	BG307a	Brake light switch & cover		8.60	ea
BO903h	Back axle rebuild kit (late 'heavy' axle)	1938-39	19.70	ea	BN12	Cross-shaft spring, uncoupled brakes	1923-30	4.50	ea
Back axle bearings					BN49	Cross-shaft spring, coupled brakes	1930-32	3.25	ea
BO51	Hub bearing (taper bore)	1923-26	OOS		BN73	Cross-shaft spring, coupled brakes	1932-38	5.20	ea
BO89	Hub bearing	1926-38	8.20	ea	BN59	Cross-shaft bush (1" ID, 1 1/16" OD)		5.90	ea
BO89s	Hub bearing (sealed)	1926-38	9.80	ea	BN71	Cross-shaft bush (1 11/64" OD, 1 1/4" OD)		6.50	ea
2K5678	Hub bearing (late axle)	1938-39	8.70	ea	BN57	Brake cross-shaft centre bearing lockwashers	1930-36	.60	ea
2K5678s	Hub bearing (late axle - sealed)	1938-39	9.90	ea	BN61c	Cross-shaft cotter, washer & nut	1930-39	2.40	ea
					9E93	Rear brake cable brackets for use with flattened springs	Sports	3.85	pr

FRONT AXLE

BM96a	Steering arm (incl. p&p)	All	75.00	ea
9C134a	Steering arm (lowered suspension)	Sports	75.00	ea
BL9c	Kingpin set (kingpins, bushes, thrust washers, cotters)	1923-36	44.70	set
BL9	Kingpin, Austin (std, +.002", +.005", +.010", +.015", +.025")		12.80	ea
BL7/8	Kingpin bushes, Austin (pair)	1923-36	6.60	pr
1A4134c	Kingpin set (as BL9c, Girling)	1936-39	46.80	set
1A4134	Kingpin, Girling (std, +.002", +.005", +.010", +.015", +.025")		12.80	ea
BL906	Pack of hardened shim washers (2 x 40 thou & 2 x 20 thou)		.70	pack
BL10c	Kingpin cotter, nut & washer	All	2.00	ea
BL48	Kingpin threaded cap	1923-36	3.90	ea
1A4135	Front hub Welch plug	1936-39	.50	ea
BT924	Kingpin greaser	1923-36	13.00	ea
BT926	Kingpin extractor tool	All	25.90	ea
BT969p	½" parallel reamer		26.90	ea
BT968t	Tap for top of Austin stub axle (kingpin cap)	1923-36	19.20	ea
BL41	Hub bearing (small)	All	5.20	ea
BL41s	Hub bearing (small – sealed)	All	5.90	ea
BL40	Hub bearing (taper bore)	1923-26	OOS	
BL63	Hub bearing (large)	1926-39	8.20	ea
BL63s	Hub bearing (large – sealed)	1926-39	9.80	ea
BL62	Hub felt seal	All	1.95	ea
BL62a	Hub lip seal (modern replacement)	1926-39	2.90	ea
BL18a	Hub lip seal (early)	1923-26	3.60	ea
BL17	Hub felt seal plate	All	1.45	ea
BL20	Hub bearings spacer (2nd-hand)	All	2.95	ea
BL23e	Wheel stud (EN24) & rivet	1923-26	4.30	ea
BL23	Wheel stud (EN24) & rivets	1927-39	4.15	ea
BO54s	Wheel stud, long (EN24) & rivets	Special	4.90	ea
BL46	Hub gasket	All	.50	ea
BL4	Front hub castle nut	All	5.10	ea
BL5	Split pin for above	All	.05	ea
BL19	Hub-clamping screw	1923-28	.50	ea
BL21	Front hub cap with Austin script	1923-26	9.80	ea
BL100	Front hub cap (2nd-hand)	1926-39	8.50	ea
BL45	Outer hub grease plug	All	2.20	ea
BR13c	Spring shackles (c/w grease nipples, nuts & tab washers)	All	98.70	axle
BR14	Spring shackle pin bush	All	3.20	ea
BR15	Spring shackle nuts	All	.20	ea
BR17	Spring shackle lockwasher	All	.40	ea
BM123	Radius arm ball joint	All	84.00	ea
BM116	Radius arm ball pivot bushes	All	8.50	pr
BM197	Radius arm waisted bolt, castellated nut & split pin	All	4.50	set
BM196	Radius arm waisted bolt spring	1934-39	2.95	ea
BM114	Radius arm nut	All	2.90	ea
BM115	Radius arm spring washer	All	.10	ea
B8-63/4e	Radius arm ends for lowered suspension	Sports	142.00	pr
9C161	Bolt, nut & spring washer for above	Sports	5.90	ea
BM107c	Drag link set (ball pin, cups, spring, castle nut & split-pin)	All	14.60	set
BM102c	Drag link bolt & nyloc nut	All	.70	pr

BM84c	Track rod end set (pins, bushes, shims, cotters, washers & nuts)	All	13.60	set
BM84	Track rod end pin	All	3.40	ea
BM95	Track rod end bush	All	1.95	ea
BM95o	Track rod end bush +.015" OD	All	1.95	ea
BM85c	Track rod end cotter, washer & nut	All	2.60	ea
BM904	Track rod end shim (20 thou)		.30	pr
BM88	Track rod end clamp bolt	All	.45	ea
BM93	Track rod lever nut	All	.40	ea
BM94	Spring washer for BM93	All	.05	ea
BU36	Front axle link bolt	1927-38	6.80	ea
BX1	Straight grease nipple (1/8" BSP)	All	.80	ea
BR51	Angled grease nipple (1/8" BSP)	All	.95	ea
2H1129	Angled grease nipple (5/16" BSF for Girling front axle)	1936-39	1.20	ea
BS6	Wheel nut (manganese bronze)	All	2.50	ea
BS6s	Wheel nut (stainless steel)	Special	3.25	ea

BACK AXLE

BP31k	Crown wheel & pinion (4.9:1, early/late crown-wheel)	1923-29	438.00	set
BP88k	Crown wheel & pinion (4.9:1 'screw-in' torque tube)	1929-30	444.00	set
BP98k	Crown wheel & pinion (4.9:1, short pinion shaft)	1930-31	438.00	set
BP117k	Crown wheel & pinion (5.25:1)	1931-37	438.00	set
BP178k	Crown wheel & pinion (5.25:1, 1 1/8" shoulder)	1931-37	438.00	set
BP120k	Crown wheel & pinion (5.67:1)	Special	440.00	set
Other ratios are available to special order – please ring.				
BO18	Halfshaft (short, .875" journal)	1923-30	180.00	ea
BO128	Halfshaft (short, .890" journal)	1931	178.00	ea
BO136	Halfshaft (long)	1931-38	182.00	ea
BO128t	Halfshaft (short, extended taper, .890" journal)	Special	188.00	ea
BO136t	Halfshaft (long, extended taper)	1931-39	192.00	ea
BO22	Halfshaft Woodruff key	All	2.20	ea
1A7212a	Key for long-taper halfshaft	Special	1.20	ea
BO19	Halfshaft castle nut (small)	1923-31	4.95	ea
BO138	Halfshaft castle nut (large)	1931-38	6.30	ea
2K6952	Halfshaft nut (late axle)	1938-39	7.60	ea
BO21	Halfshaft split pin	All	.05	ea
BO43	Halfshaft felt seal	1923-38	1.45	ea
BO43a	Halfshaft lip seal (modern replacement)	1923-29	2.40	ea
BO43b	Halfshaft lip seal (replaces felt washer & steel cup, etc)	1929-38	2.15	ea
BO43c	Larger version of BO43b lip seal for some axle casings	1929-38	2.40	ea
BO901	Halfshaft replacement kit (gaskets, tab washers, Woodruff key, lip seals, etc)	All	12.70	ea
BO45	Rear hub, outer (EN24T)	1923-38	105.60	ea
1A7661a	Rear hub, outer (extended taper)	Special	112.80	ea
BO46	Rear hub cap with Austin script	1923-26	25.90	ea
BO75	Hub gasket	All	.50	ea
BO88	Hub felt seal	All	1.95	ea
BO88a	Hub lip seal (modern replacement)	1926-38	2.90	ea
BO48a	Hub lip seal (early)	1923-26	3.60	ea
2K5710	Hub felt seal (late axle)	1938-39	1.85	ea
2K5710a	Hub lip seal (late axle - modern replacement)	1938-39	3.00	ea